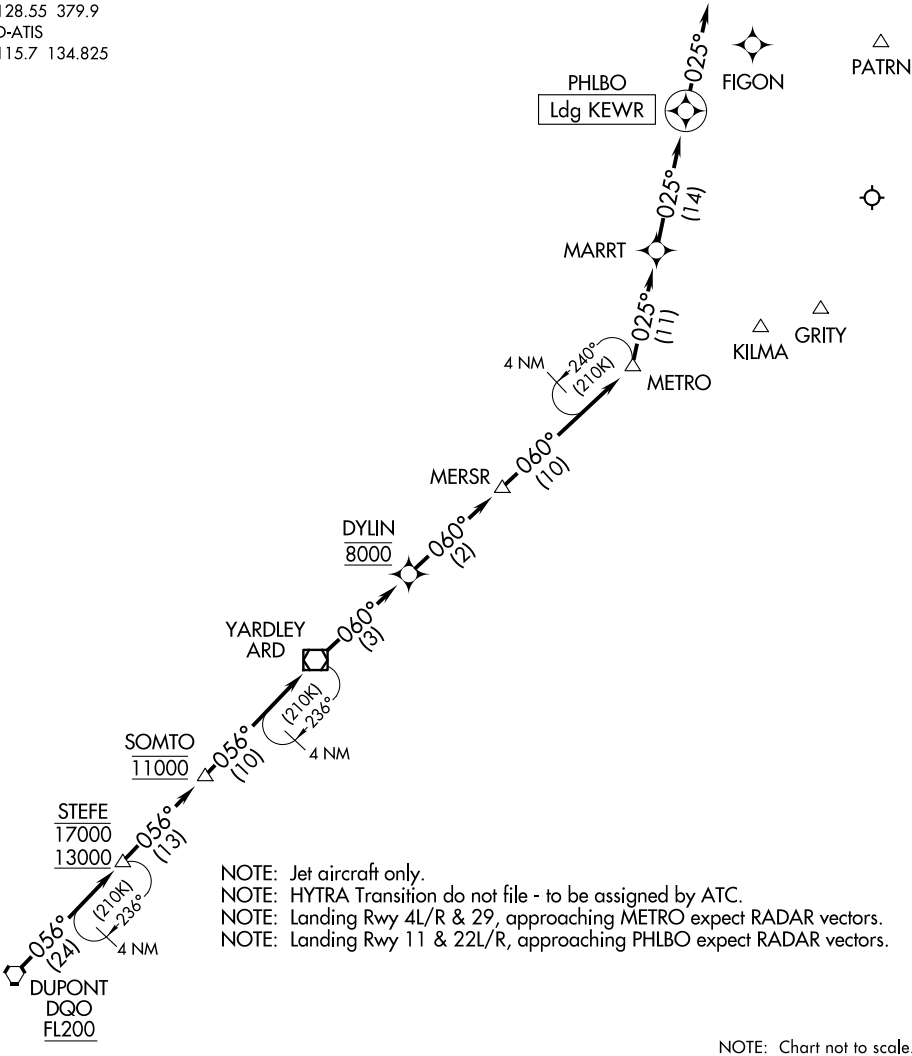


PHLBO FOUR ARRIVAL (RNAV) Arrival Routes

NEWARK LIBERTY INTL (EWR)  
NEWARK, NEW JERSEY

WASHINGTON CENTER  
132.52 307.25  
NEWARK APP CON  
128.55 379.9  
D-ATIS  
115.7 134.825

RNAV 1 - DME/DME/IRU or GPS.  
RADAR required.



NOTE: Jet aircraft only.  
NOTE: HYTRA Transition do not file - to be assigned by ATC.  
NOTE: Landing Rwy 4L/R & 29, approaching METRO expect RADAR vectors.  
NOTE: Landing Rwy 11 & 22L/R, approaching PHLBO expect RADAR vectors.

ARRIVAL ROUTE DESCRIPTION

From DQO VORTAC on track 056° to cross STEFE between 13000 and 17000, then on track 056° to cross SOMTO at 11000, then on track 056° to ARD VOR/DME, then on track 060° to cross DYLIN at 8000, then on track 060° to MERSR, then on track 060° to METRO, then on track 025° to MARRT, then on track 025° to PHLBO, then on track 025°. Expect RADAR vectors to final approach course.

PHLBO FOUR ARRIVAL (RNAV) Arrival Routes