

LOC/DME I-EWR <b>110.75</b> Chan <b>44</b> (Y)	APP CRS <b>039°</b>	Rwy Idg <b>8459</b> TDZE <b>10</b> Apt Elev <b>17</b>
--	------------------------	---

**ILS Z RWY 4L (SA CAT I & II)**  
NEWARK LIBERTY INTL (EWR)

NEWARK LIBERTY INTL (EWR)

RNP APCH - GPS.

DME and RADAR required.

**T** SA CAT I: Requires specific OPSPEC, MSPEC, or LOA approval and use of HUD to DH.

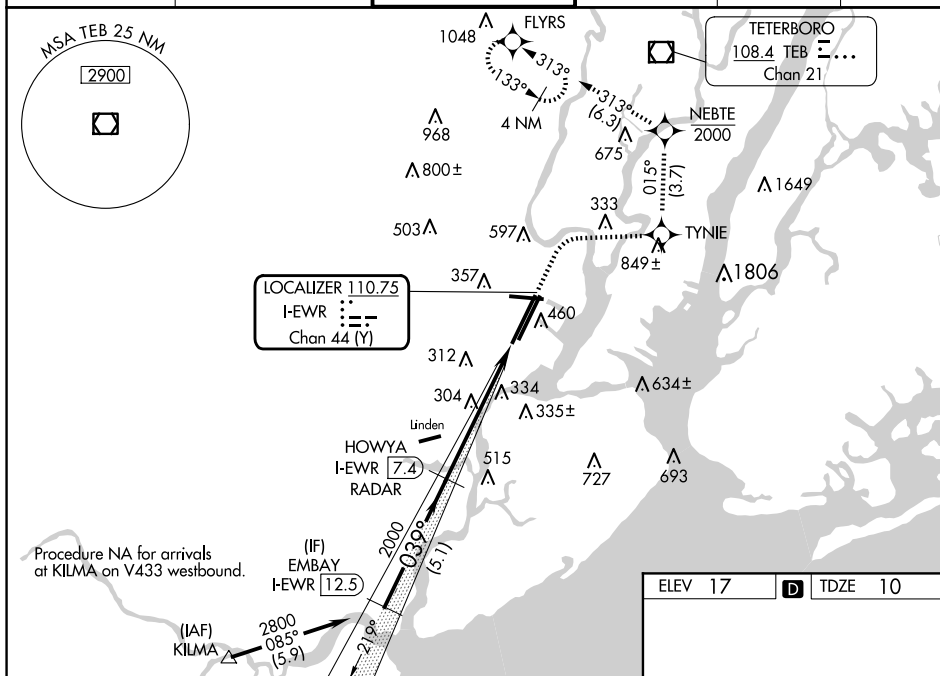
SA CAT II: Reduced lighting: requires specific OPSPEC, MSPEC, or LOA approval and use of autoland or HUD to touchdown.

MALSR

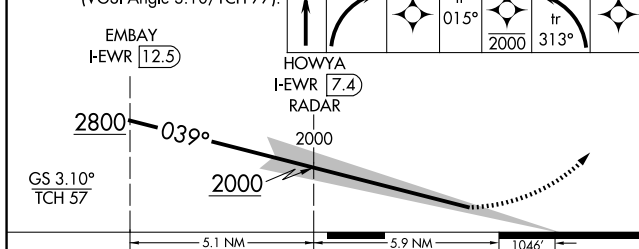


**MISSED APPROACH:** (Do not exceed 210K until NEBTE) Climb to 520, then climbing right turn to 2000 direct TYNIE and on track 015° to NEBTE, cross NEBTE at or below 2000, then climbing left turn to 3000 on track 313° to FLYRS and hold, continue climb-in-hold to 3000.

D-ATIS 115.7 134.825	NEWARK APP CON 128.55 379.9	NEWARK TOWER 118.3 257.6	GND CON 121.8	CLNC DEL 118.85	CPDLC
-------------------------	--------------------------------	-----------------------------	------------------	--------------------	-------

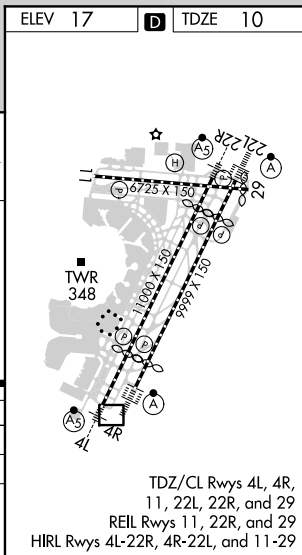


VGSI and ILS glidepath not coincident  
(VGSI Angle 3.10/TCH 77).



CATEGORY	A	B	C	D
S-ILS 4L	SA CAT I	RA 150/14	150	DA 160
S-ILS 4L	SA CAT II	RA 100/12	100	DA 110

SA CATEGORY I & II ILS - SPECIAL AIRCREW  
& AIRCRAFT CERTIFICATION REQUIRED



ILS Z RWY 4L (SA CAT I & II)