

LOC/DME I-EZA  
**108.7**  
Chan **24**

APP CRS  
**039°**

Rwy Idg  
4R **8809**  
4L **8459**  
TDZE **11**  
Apt Elev **17**

ILS or LOC RWY 4R

NEWARK LIBERTY INTL (EWR)

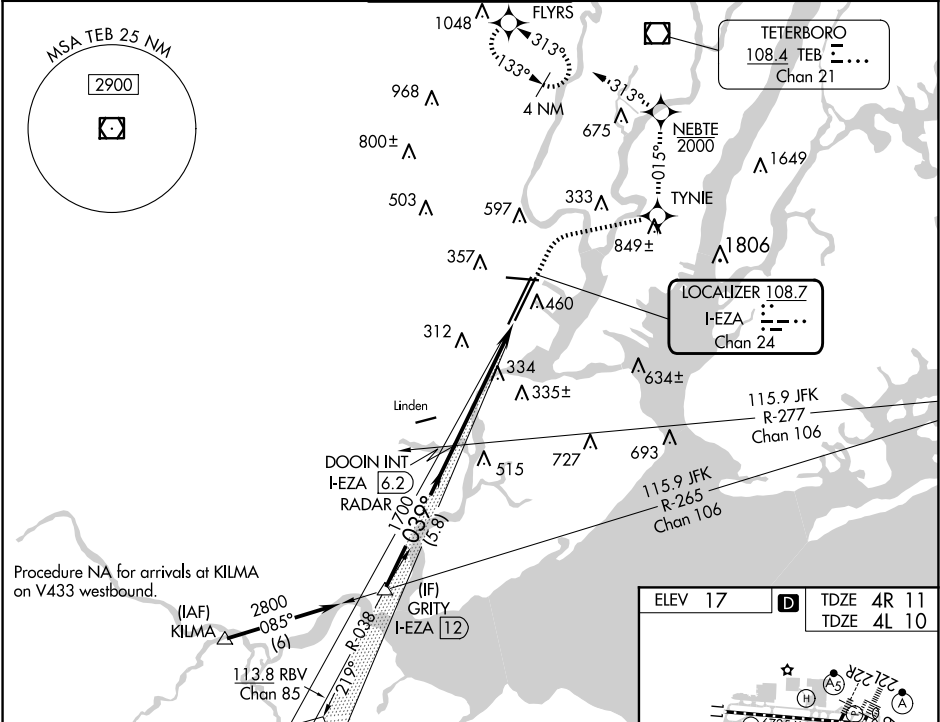
RNP APCH - GPS.  
RADAR required.

When Circling to Rwy 29 at night, operational VGSI required, remain on or above VGSI glidepath until threshold. For inop ALS, increase Sidestep 4L Cat C visibility to 1½ SM.

4R ALSF-2  
4L MALSR

MISSED APPROACH: (Do not exceed 210K until NEBTE) Climb to 560 then climbing right turn to 2000 direct TYNIE and left turn on track 015° to NEBTE, cross NEBTE at or below 2000 then climbing left turn to 3000 on track 313° to FLYRS and hold, continue climb-in-hold to 3000.

D-ATIS	NEWARK APP CON	NEWARK TOWER	GND CON	CLINC DEL	CPDLC
115.7 134.825	128.55 379.9	118.3 257.6	121.8	118.85	



GRITY I-EZA 12

2800

GS 2.95° TCH 55

039°

1700

5.8 NM

3.6 NM

1.7 NM

DOOIN INT I-EZA 6.2

RADAR 1700

VGSI and ILS glidepath not coincident (VGSI Angle 2.95/TCH 71).

I-EZA 2.7

I-EZA 1

560

2000

TYNIE

tr 015°

NEBTE

2000

tr 313°

3000

FLYRS

CATEGORY	A	B	C	D
S-ILS 4R		211/18	200 (200-½)	
S-LOC 4R	600/24	589 (600-½)	600-1¼	589 (600-1¼)
SIDESTEP RWY 4L	600/55	590 (600-1)	600-1¼ 590 (600-1¼)	600-1½ 590 (600-1½)
CIRCLING	760-1	743 (800-1)	900-2¾ 883 (900-2¾)	900-3 883 (900-3)

ELEV 17

TDZE 4R 11

TDZE 4L 10

TWR 348

039°

HIRL All Rws

REIL Rws 11, 22R and 29

TDZ/CL All Rws

FAF to MAP 5.2 NM

Knots

60 90 120 150 180

Min:Sec

5:12 3:28 2:36 2:05 1:44