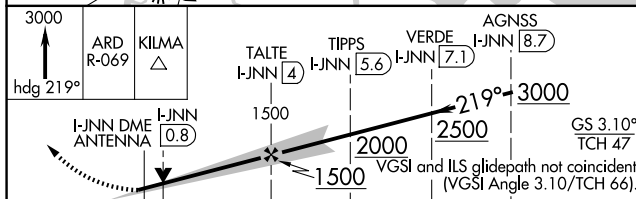
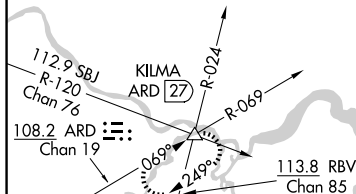
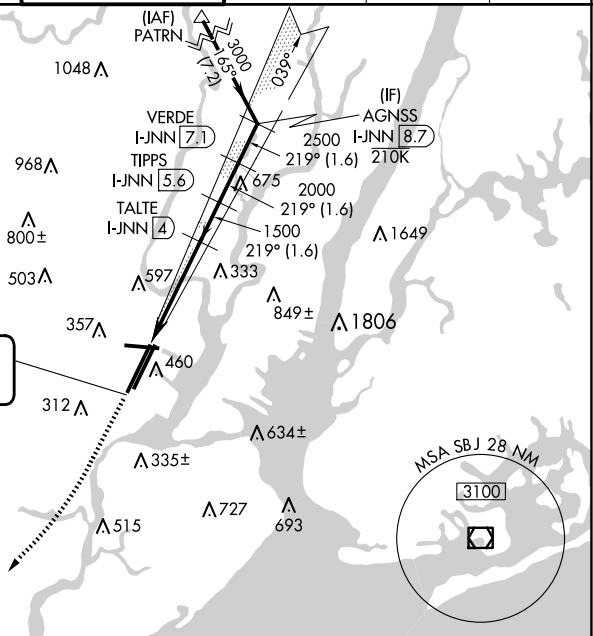


ILS or LOC RWY 22R  
NEWARK LIBERTY INTL (EWR)

**MISSED APPROACH:** Climb to 3000 on heading 219° and ARD VOR/DME R-069 to KILMA INT/ARD 27 DME and hold.

CPDLC

LOCALIZER 110.75  
I-JNN  
Chan 44 (Y)



The diagram shows the FAF to MAP segment of the instrument approach procedure. It includes the following information:

- ELEV 17**: Elevation of the field.
- D**: A boxed letter 'D' indicating a specific feature or note.
- TDZE 22R 10**: Threshold Crossing Height (TDCH) for Runway 22R is 10 feet.
- TDZE 22L 11**: Threshold Crossing Height (TDCH) for Runway 22L is 11 feet.
- 219°**: The heading of the final approach fix (FAF) to map (MAP) segment.
- TWR 348**: Tower frequency is 348 MHz.
- Obstacles**: Several obstacles are shown as circles with their MSL elevations: 6725 X 150, 11000 X 150, and 9999 X 150.
- Runways**: Runways 4L, 4R, 11, 22L, 22R, and 29 are indicated.
- Altitudes**: Altitudes of 4R, 150, and 150 are noted along the approach path.
- FAF to MAP 4.4 NM**: The distance from the Final Approach Fix (FAF) to the Map (MAP) is 4.4 nautical miles.

Knots	60	90	120	150	180
Min:Sec	4:24	2:56	2:12	1:46	1:28