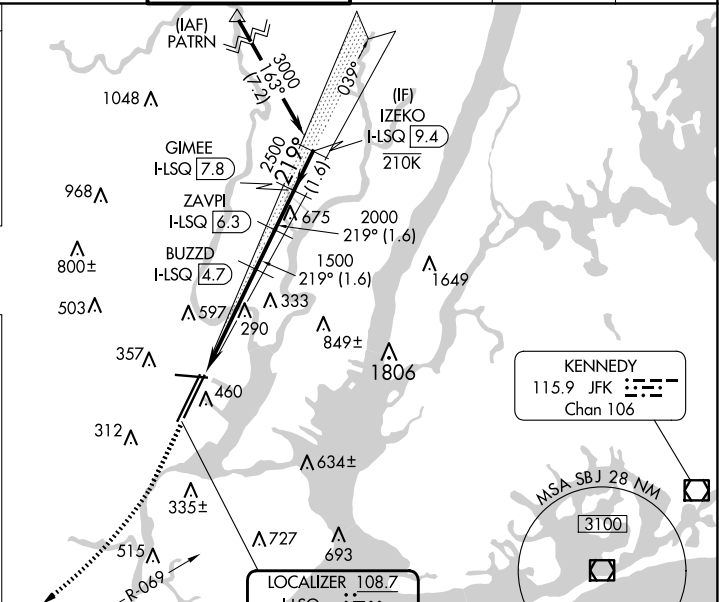
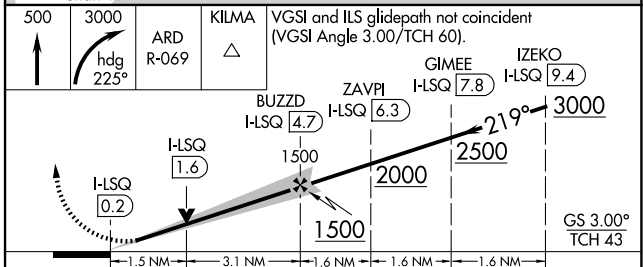


ILS or LOC RWY 22L
NEWARK LIBERTY INTL (EWR)

MISSED APPROACH: Climb to 500 then climbing right turn to 3000 on heading 225° and ARD VOR/DME R-069 to KILMA INT/ARD 27 DME and hold.



108.2 ARD
Chan 19

NEWARK LIBERTY INTL (EWR)
ILS or LOC RWY 22L