

NE-2, 10 JUL 2025 to 07 AUG 2025

NEWARK, NEW JERSEY

AL-285 (FAA)

25107

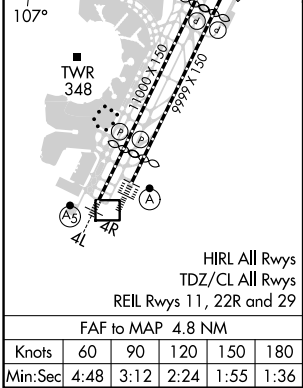
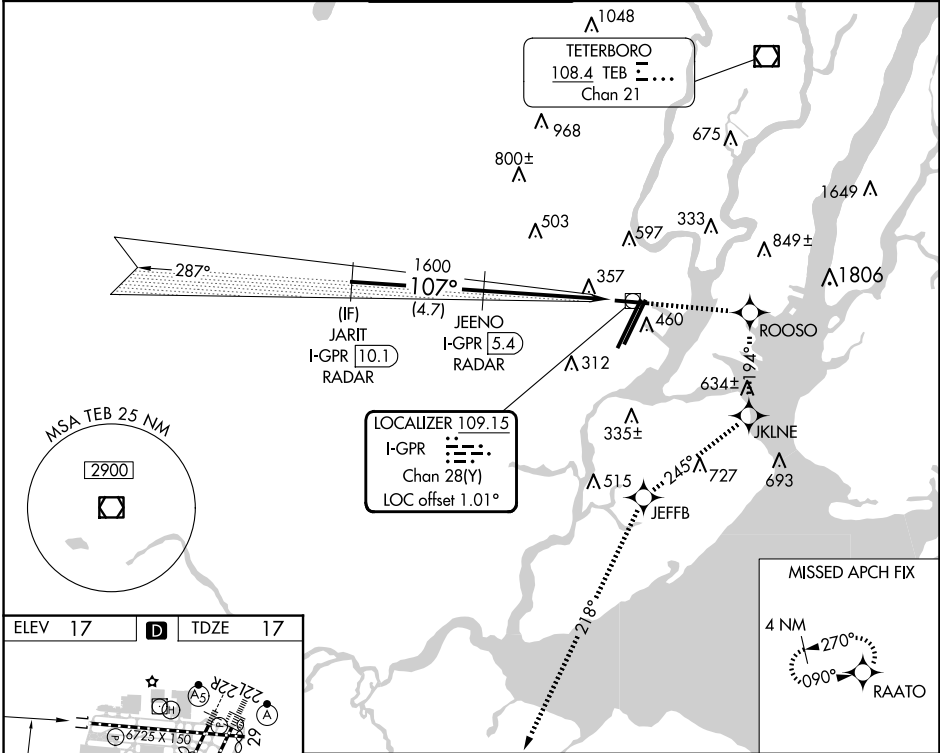
LOC/DME I-GPR	APP CRS	Rwy ldg
109.15	107°	6725
Chan 28 (Y)		TDZE 17
		Apt Elev 17

ILS or LOC RWY 11

NEWARK LIBERTY INTL (EWR)

RNP APCH - GPS.	MISSED APPROACH: (Do not exceed 230K until JKLNE) Climb to 2000 direct ROOSO and right turn on track 194° to JKLNE and right turn on track 245° to JEFFB and left turn on track 218° to RAATO and hold.
DME required. RADAR required.	
⚠ Circling NA south of Rwy 11-29. When Circling to Rwy 29 at night, operational VGS1 required, remain on or above VGS1 glidepath until threshold. Rwy 11 helicopter visibility reduction below ¼ SM NA.	

D-ATIS	NEWARK APP CON	NEWARK TOWER	GND CON	CLNC DEL	CPDLC
115.7 134.825	128.55 379.9	118.3 257.6	121.8	118.85	



		2000 ↑		ROOSO ✧		 tr 194°		JKLNE ✧		 tr 245°		JEFFB ✧		 tr 218°		RAATO ✧																																																															
JARIT I-GPR 10.1 RADAR																JEENO I-GPR 5.4 RADAR																VGSI and ILS glidepath not coincident (VGSI Angle 3.00/TCH 60).																																															
1600																107°																1600																I-GPR 2.2																I-GPR 0.6															
GS 3.00° TCH 57																4.7 NM																3.2 NM																1.6 NM																															
CATEGORY																A																B																C																D															
S- ILS 11																618-1¾																601 (700-1¾)																																															
S- LOC 11																660/55																643 (700-1)																660-1½																643 (700-1½)															
CIRCLING																660-1																643 (700-1)																900-2½ 883 (900-2½)																900-2¾ 883 (900-2¾)															

NEWARK, NEW JERSEY
Amdt 3 15JUN23

40°42'N-74°10'W

ILS or LOC RWY 11

NE-2, 10 JUL 2025 to 07 AUG 2025