

ILS RWY 22L (SA CAT I)
NEWARK LIBERTY INTL (EWR)

MISSED APPROACH: Climb to 500 then climbing right turn to 3000 on heading 225° and ARD VOR/DME R-069 to KILMA INT/ARD 27 DME and hold.



KILMA
JFK **30.2** 115.9 JFK
R-265
Chan 106

085°
265°

113.8 RBV
R-024
Chan 85

ALTERNATE
MISSED
APCH FIX

**MISSED
APCH
FIX**

**KILMA
ARD **27****

112.9 SBJ
R-120
Chan 76

108.2 ARD
R-069
Chan 19

113.8 RBV
R-024
Chan 85

ELEV 17 **D** **TDZE 11**

(IAF) PATRN

1048 A

968 A

800±

503 A

357 A

312 A

335±

515 A

R-069

108.2 ARD
Chan 19

GIMEE
I-LSQ **7.8**

ZAVPI
I-LSQ **6.3**

BUZZD
I-LSQ **4.7**

3000
3300
2500
219°
219° (1.6)

(IF) IZEKO
I-LSQ **9.4**
210K

2000
219° (1.6)

1500
219° (1.6)

1649 A

849±

1806 A

634±

727 A

693 A

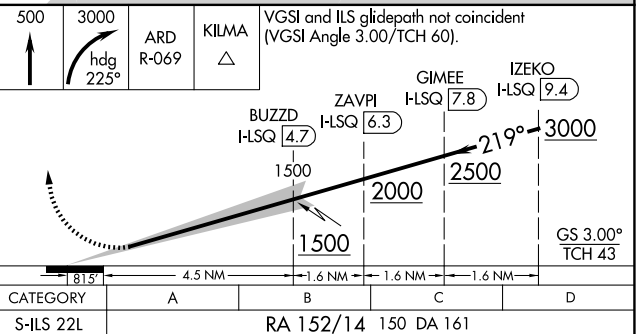
LOCALIZER 108.7
I-LSQ
Chan 24

KENNEDY
115.9 JFK
Chan 106

MSA SBJ 28 NM

3100

222 | Page



SA CATEGORY I ILS - SPECIAL AIRCREW
& AIRCRAFT CERTIFICATION REQUIRED

NE-2. 10 JUL 2025 to 07 AUG 2025