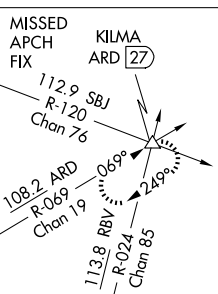
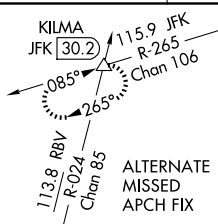


ILS RWY 22L (CAT II & III)
NEWARK LIBERTY INTL (EWR)

MISSED APPROACH: Climb to 500 then climbing right turn to 3000 on heading 225° and ARD VOR/DME R-069 to KILMA INT/ARD 27 DME and hold.

[illegible]

(IAF) PATRN

1048 A

58 A

0 ±

3 A

357 A

312 A

515 A

R-069

108.2 ARD ::::

Chan 19

GIMEE

I-LSQ 7.8

ZAVPI

I-LSQ 6.3

BUZZD

I-LSQ 4.7

3000

2300

219° (1.6)

219° (1.6)

2000

219° (1.6)

1500

219° (1.6)

039°

(IF) IZEKO

I-LSQ 9.4

210K

A 597

A 290

A 333

A 849 ±

A 1649

A 460

A 1806

A 634 ±

A 727

A 693

LOCALIZER 108.7

I-LSQ ::::

Chan 24

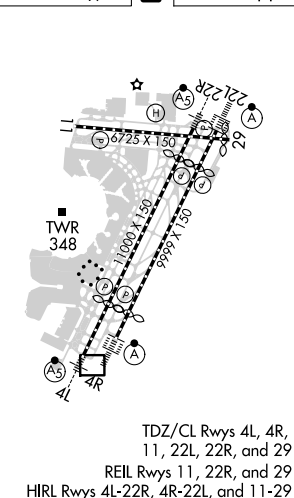
KENNEDY

115.9 JFK ::::

Chan 106

MSA SBJ 25 NM

3100



500 ↑	3000 hdg 225°	ARD R-069	KILMA △	VGSI and ILS glidepath not coincident (VGSI Angle 3.00°/TCH 60).			
				IZEKO I-LSQ 9.4 3000 219° 2500 2000 1500 1500 815° 4.5 NM 1.6 NM 1.6 NM 1.6 NM GS 3.00° TCH 43			
CATEGORY	A			B	C	D	
S-ILS 22L	CAT II RA 102/12 100 DA 111						
S-ILS 22L	CAT III RVR 06						

CATEGORY II & III ILS - SPECIAL AIRCREW
& AIRCRAFT CERTIFICATION REQUIRED