

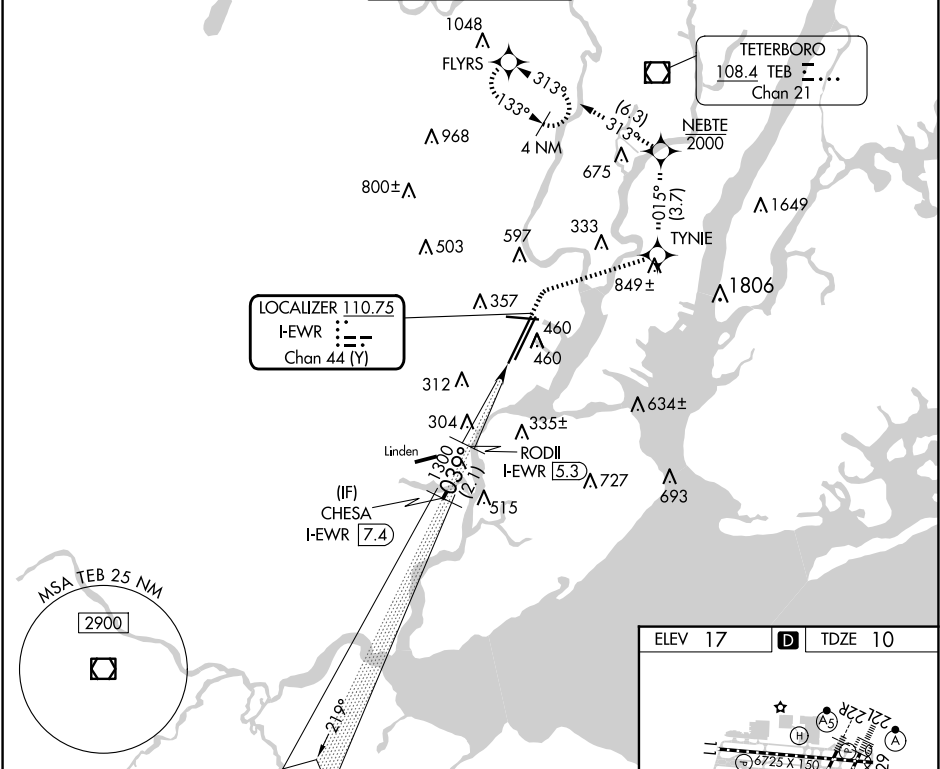
| | | |
|---------------|----------|---------|
| LOC/DME I-EWR | APP CRS | Rwy ldg |
| 110.75 | 039° | 8459 |
| Chan 44 (Y) | TDZE | 10 |
| | Apt Elev | 17 |

COPTER ILS Y or LOC Y RWY 4L

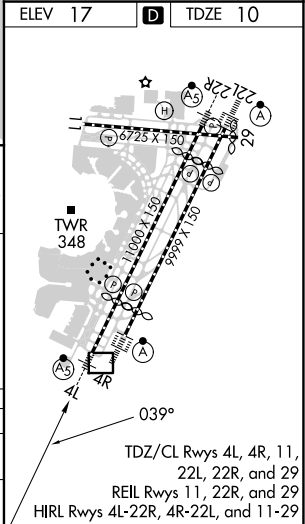
NEWARK LIBERTY INTL (EWR)

| | | |
|-------------------------|-------|---|
| RNP APCH - GPS. | MALSR | MISSED APPROACH: Climb to 520, then climbing right turn to 2000 direct TYNIE, then on track 015° to NEBTE, cross NEBTE at or below 2000, then climbing left turn to 3000 on track 313° to FLYRS and hold. |
| DME and RADAR required. | | |
| | | |

| | | | | | |
|---------------|----------------|--------------|---------|----------|-------|
| D-ATIS | NEWARK APP CON | NEWARK TOWER | GND CON | CLNC DEL | CPDLC |
| 115.7 134.825 | 128.55 379.9 | 118.3 257.6 | 121.8 | 118.85 | |



| | | | | | |
|---|-----------------|---------------|---------------|-------|--|
| VGSI and ILS glidepath not coincident (VGSI Angle 3.10/TCH 77). | | | | | |
| CHESA I-EWR 7.4 | RODII I-EWR 5.3 | TYNIE tr 015° | NEBTE tr 313° | FLYRS | |
| 2000 | 1300 | | | | |
| GS 3.10° HCH 57 | | | | | |
| | 2.1 NM | 2.3 NM | 1.4 | | |
| CATEGORY | COPTER | | | | |
| H-ILS 4L | 210/12 | 200 (200-¼) | | | |
| H-LOC 4L | 560/12 | 550 (600-¼) | | | |



COPTER ILS Y or LOC Y RWY 4L

NE-2, 10 JUL 2025 to 07 AUG 2025

NE-2, 10 JUL 2025 to 07 AUG 2025