

WAAS CH 93713 W02D	APP CRS 021°	Rwy Ldg 8000 TDZE 590 Apt Elev 599
--	------------------------	---

RNAV (GPS) Y RWY 2R
NASHVILLE INTL (BNA)

T For uncompensated Baro-VNAV systems, LNAV/VNAV NA below -11°C or above 54°C. Simultaneous approach authorized with Rwy 2L/C. LNAV procedure NA

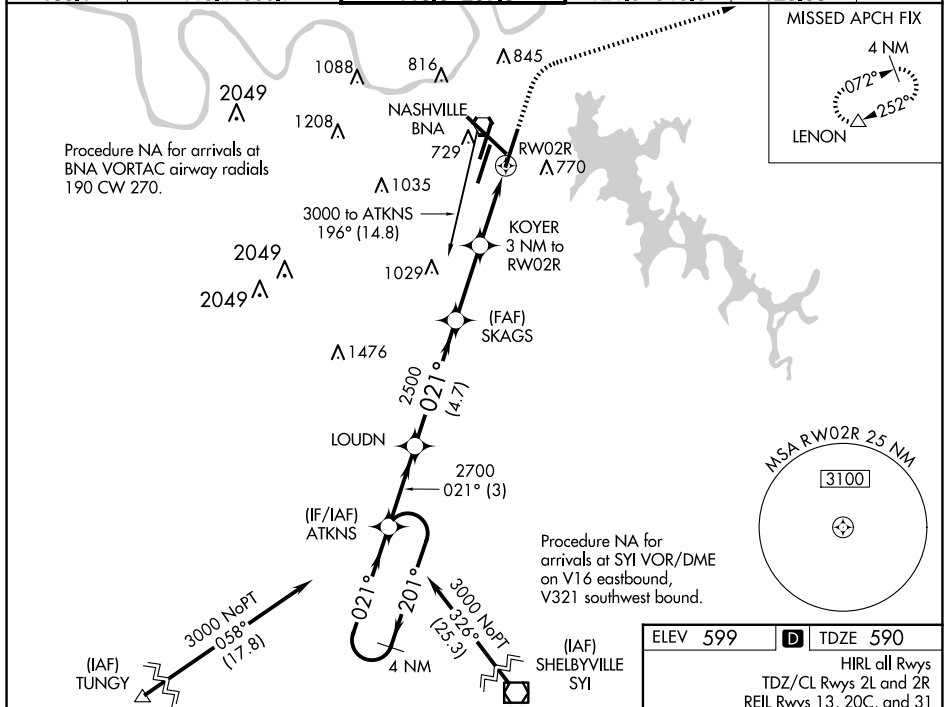
A during simultaneous operations. Use of FD or AP providing RNAV track guidance required during simultaneous operations. For inop ALSF-2 increase LNAV/VNAV visibility all Cats to RVR 5400.

ALSF-2



MISSED APPROACH: Climb to 1300 then climbing right turn to 4000 direct LENON and hold.

D-ATIS	NASHVILLE APP CON	NASHVILLE TOWER	GND CON	CLNC DEL	CPDLC
135.1	118.4 360.7	118.6 257.8	121.9 348.6	126.05	

[illegible]