

WAAS CH 42713 W02A	APP CRS 021°	Rwy Ldg 7702 TDZE 599 Apt Elev 599
--	------------------------	---

RNAV (GPS) Y RWY 2L
NASHVILLE INTL (BNA)

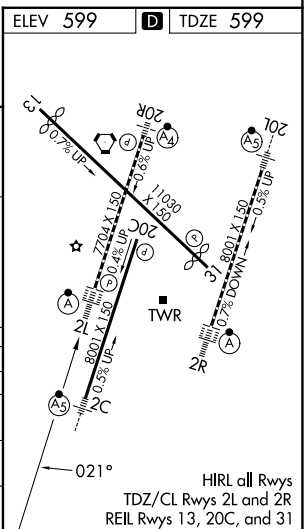
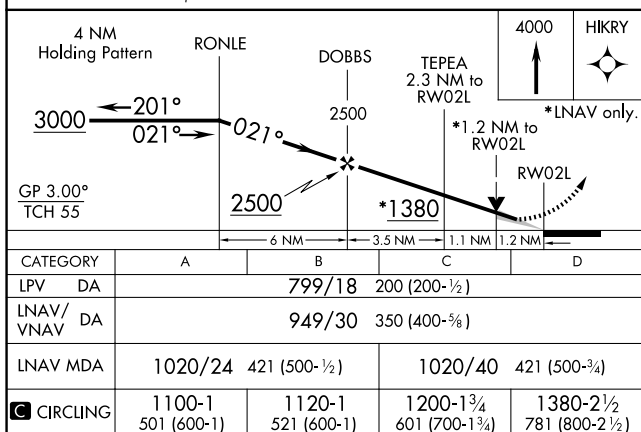
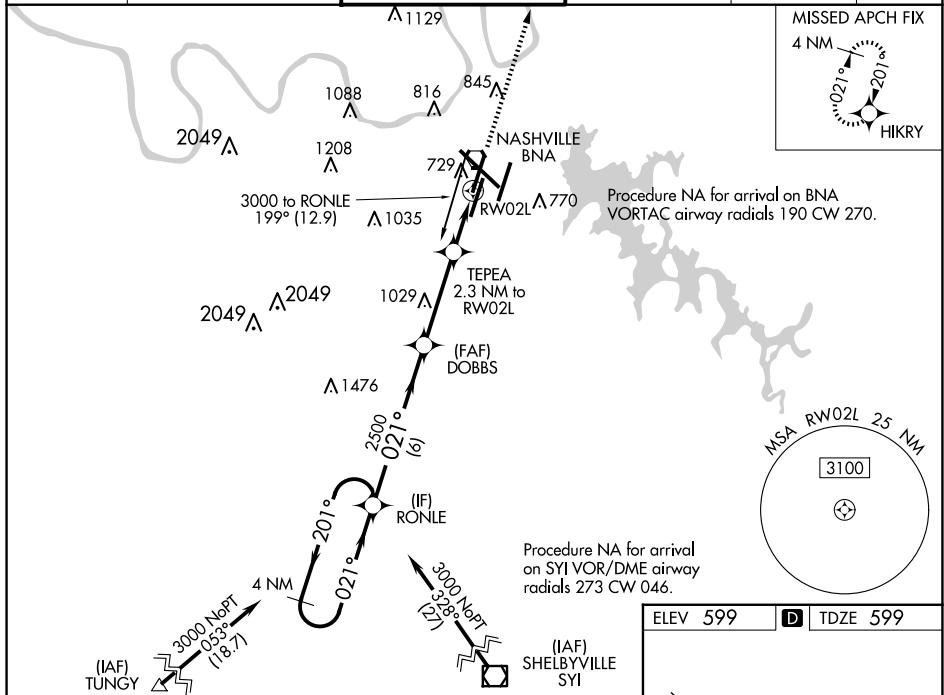
V For uncompensated Baro-VNAV systems, LNAV/VNAV NA below -11°C (13°F) or above 54°C (130°F). Use of FD or AP providing RNAV track guidance required during simultaneous operations. LNAV procedure NA during simultaneous operations. Simultaneous approach authorized with Rwy 2R.
A DME/DME RNP-0.3 NA.

ALSF-2



MISSED APPROACH:
Climb to 4000 direct HIKRY
and hold, continue
climb-in-hold to 4000.

D-ATIS 135.1	NASHVILLE APP CON 118.4 360.7	NASHVILLE TOWER 118.6 257.8	GND CON 121.9 348.6	CLNC DEL 126.05	CPDLC
-----------------	----------------------------------	--------------------------------	------------------------	--------------------	-------



SE-1, 10 JUL 2025 to 07 AUG 2025

SE-1, 10 JUL 2025 to 07 AUG 2025