

WAAS CH 78411 W20A	APP CRS 201°	Rwy Ldg TDZE Apt Elev	7702 578 599
--	------------------------	-----------------------------	---

RNAV (GPS) Y RWY 20R

NASHVILLE INTL (BNA)

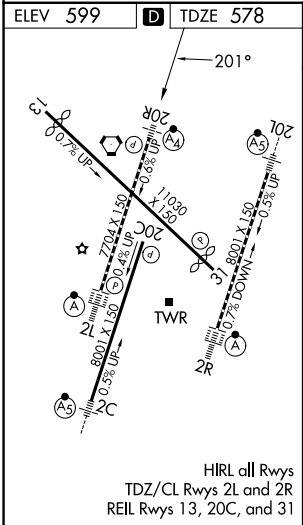
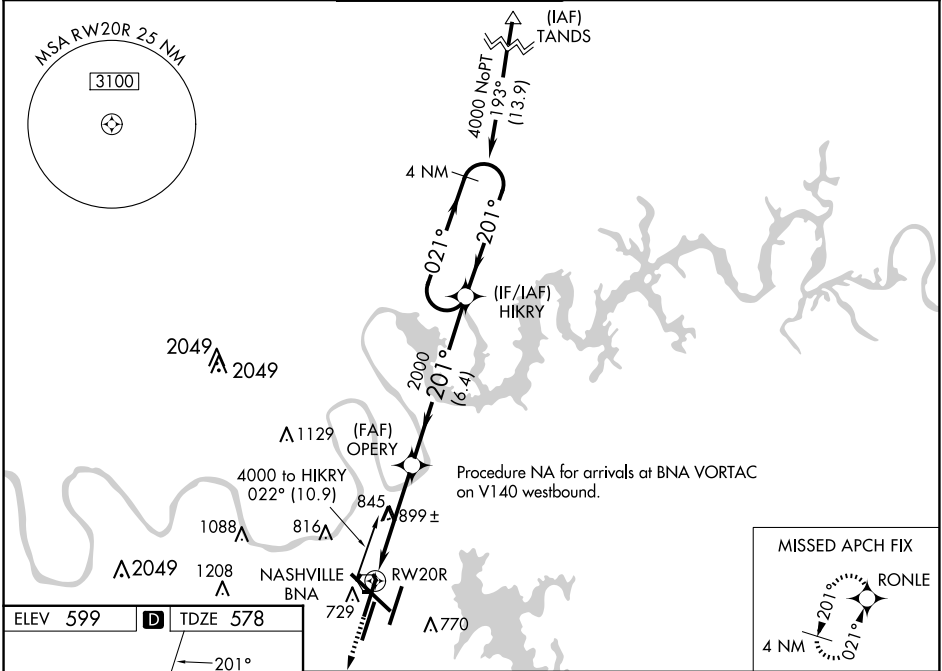
⚠ For uncompensated Baro-VNAV systems, LNAV/VNAV NA below -11°C (13°F) or above 54°C (130°F). Use of FD or AP providing RNAV track guidance required during simultaneous operations. Simultaneous approach authorized with Rwy 20L. LNAV procedure NA during simultaneous operations. DME/DME RNP-0.3 NA. For inop ALS, increase LNAV/VNAV Cat D visibility to 1½ SM and LNAV Cats C and D visibility to 1¼ SM.

MALSF

MISSED APPROACH:

Climb to 3000 direct RONLE and hold.

D-ATIS 135.1	NASHVILLE APP CON 118.4 360.7	NASHVILLE TOWER 118.6 257.8	GND CON 121.9 348.6	CLNC DEL 126.05	CPDLC
------------------------	---	---------------------------------------	-------------------------------	---------------------------	-------



3000 ↑ RONLE		VGSI and RNAV glidepath not coincident (VGSI Angle 3.00/TCH 79).			
*LNAV only.		HIKRY 4 NM Holding Pattern			
*1.6 NM to RW20R		GP 3.00° TCH 60			
RW20R		OPERY 2000			
1.6 NM		2.8 NM		6.4 NM	
CATEGORY		A		B	
LPV DA		778/40		200 (200-¾)	
LNAV/VNAV DA		1038-1⅓		460 (500-1⅓)	
LNAV MDA		1160/40 582 (600-¾)		1160-1⅓ 582 (600-1⅓)	
CIRCLING		1160-1 561 (600-1)		1200-1¾ 601 (700-1¾) 1380-2½ 781 (800-2½)	