

APP CRS 021°	Rwy Ldg 8000 TDZE 590 Apt Elev 599
------------------------	---

RNAV (RNP) Z RWY 2R
NASHVILLE INTL (BNA)

RNP AR APCH.

T For uncompensated Baro-VNAV systems, procedure NA below -11°C or above 54°C. For inoperative ALSF-2, increase RNP 0.15 all Cats visibility to RVR 5600, RNP 0.30 all Cats visibility to 1 3/8 mile. Simultaneous approach authorized with Rwy 2L/C. Use of FD or AP providing RNP track guidance required during simultaneous operations.

ALSF-2



MISSED APPROACH:
Climb to 1300 then
climbing right turn to
4000 direct LENON
and hold.

D-ATIS
135.1

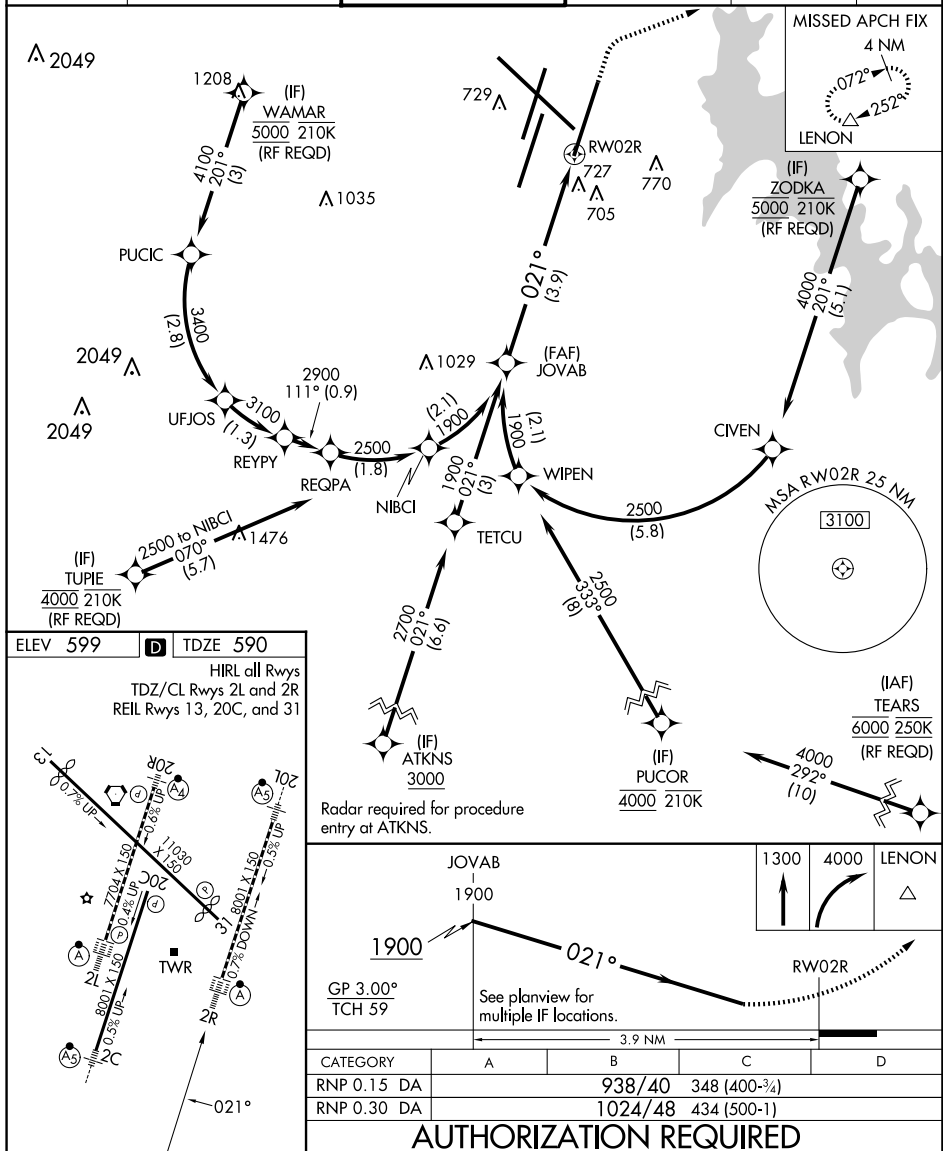
NASHVILLE APP CON
118.4 360.7

NASHVILLE TOWER
118.6 257.8

GND CON
121.9 348.6

CLNC DEL
126.05

CPDLC



NASHVILLE, TENNESSEE
Amdt 2B 16JUL20

36°07'N-86°41'W

NASHVILLE INTL (BNA)

RNAV (RNP) Z RWY 2R

SE-1, 10 JUL 2025 to 07 AUG 2025