

APP CRS	Rwy Ldg	7702
021°	TDZE	599
	Apt Elev	599

RNAV (RNP) Z RWY 2L

NASHVILLE INTL (BNA)

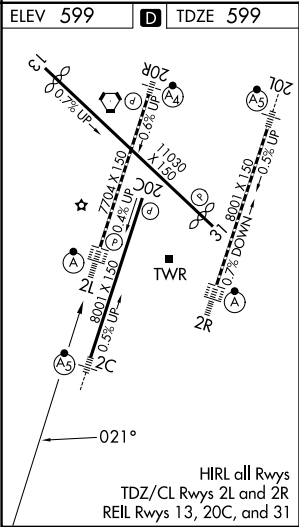
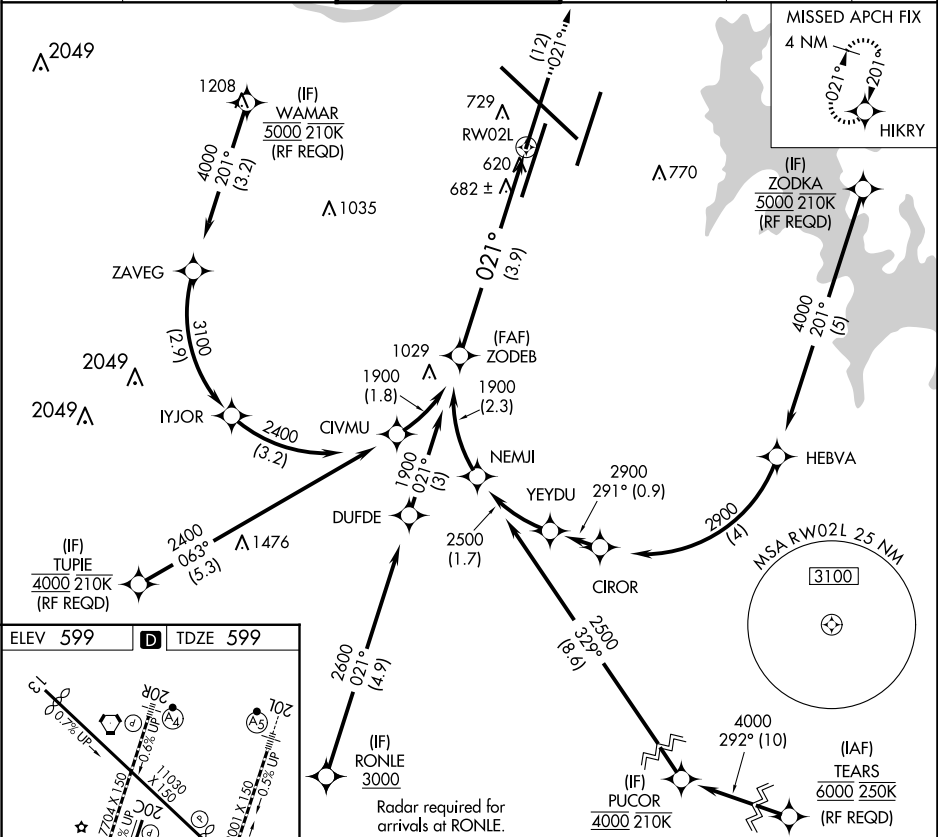
▼

For uncompensated Baro-VNAV systems, procedure NA below -11°C (13°F) or above 54°C (130°F). GPS required. Simultaneous approach authorized with Rwy 2R. For inop ALSF-2, increase RNP 0.15 all Cats visibility to RVR 4700, increase RNP 0.30 all Cats visibility to 1 ¼ mile. Use of FD or AP providing RNAV track guidance required during simultaneous operations.

ALSF-2

MISSED APPROACH:
Climb to 4000 on track 021° to HIKRY and hold, continue climb-in-hold to 4000.

D-ATIS	NASHVILLE APP CON	NASHVILLE TOWER	GND CON	CLNC DEL	CPDLC
135.1	118.4 360.7	118.6 257.8	121.9 348.6	126.05	



See planview for multiple IF locations.			
1900			
021°			
3.9 NM			
CATEGORY	A	B	C
RNP 0.15 DA		898/24	299 (300-½)
RNP 0.30 DA		991/41	392 (400-¾)
AUTHORIZATION REQUIRED			