

RNAV (RNP) Z RWY 2C  
NASHVILLE INTL (BNA)

NASHVILLE INTL (BNA)

APP CRS <b>021°</b>	Rwy Ldg TDZE Apt Elev	<b>7601</b> <b>587</b> <b>599</b>
------------------------	-----------------------------	---

RNP AR APCH - GPS.

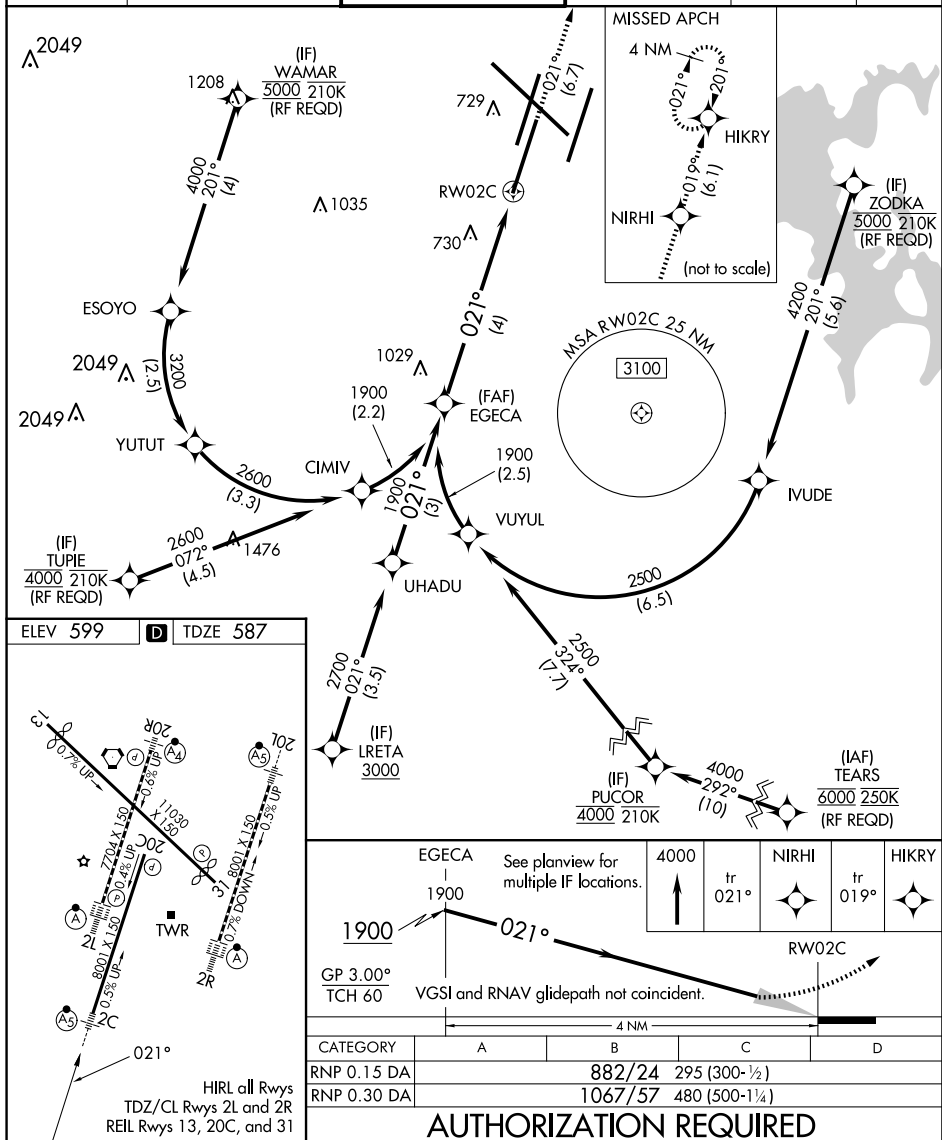
**T** For uncompensated Baro-VNAV systems, procedure NA below -11°C or above 54°C. Simultaneous approach authorized with Rwy 2R. Use of FD or AP providing RNAV track guidance required during simultaneous operations. For inop MALS, increase RNP 0.30 visibility to 1 $\frac{1}{8}$  mile.

MALSR



**MISSED APPROACH:** Climb to 4000 on track 021° to NIRHI and on track 019° to HIKRY and hold, continue climb-in-hold to 4000.

D-ATIS 135.1	NASHVILLE APP CON 118.4 360.7	NASHVILLE TOWER 118.6 257.8	GND CON 121.9 348.6	CLNC DEL 126.05	CPDLC
-----------------	----------------------------------	--------------------------------	------------------------	--------------------	-------



NASHVILLE, TENNESSEE

Amdt 2C 07OCT21

NASHVILLE INTL (RNA)

36°07'N-86°41'W

## RNAV (RNP) Z RWY 2C

SE-1, 10 JUL 2025 to 07 AUG 2025

SE-1, 10 JUL 2025 to 07 AUG 2025