

APP CRS	Rwy Ldg	8001
201°	TDZE	588
	Apt Elev	599

RNAV (GPS) RWY 20C

NASHVILLE INTL (BNA)

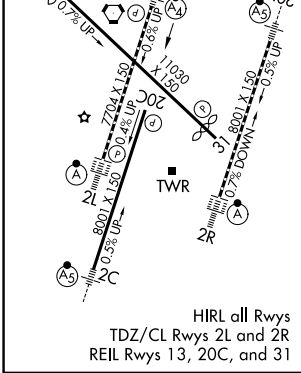
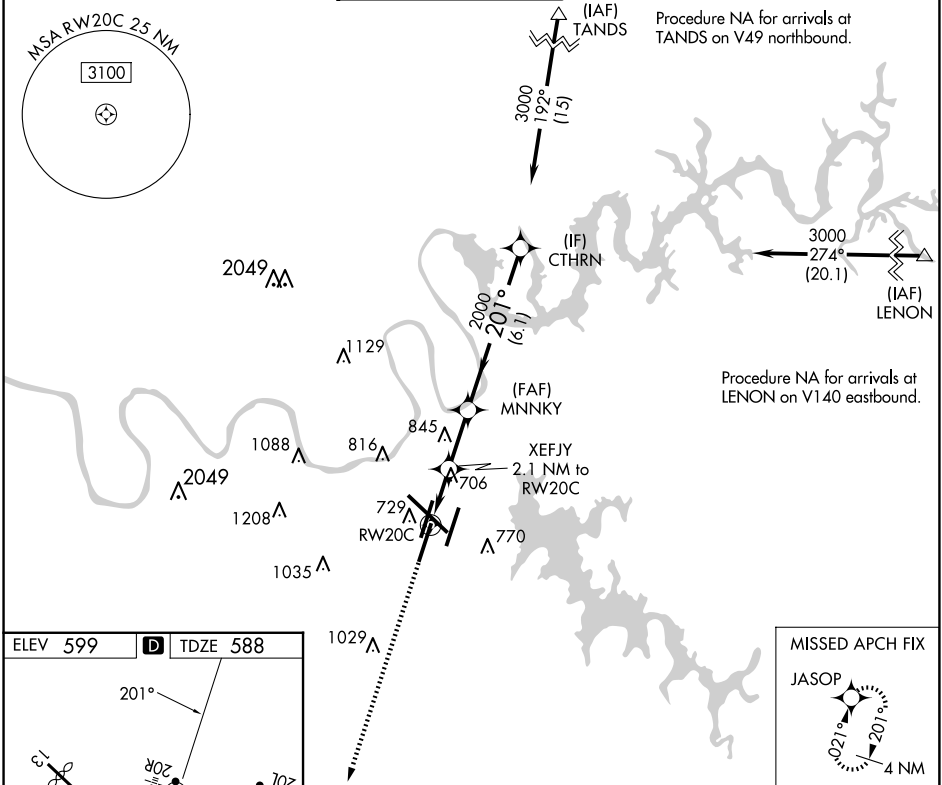
▽

▲

DME/DME RNP-0.3 NA.
Helicopter visibility reduction below ¾ SM NA.

MISSED APPROACH: Climb to 3000 direct JASOP and hold.

D-ATIS 135.1	NASHVILLE APP CON 118.4 360.7	NASHVILLE TOWER 118.6 257.8	GND CON 121.9 348.6	CLNC DEL 126.05	CPDLC
-----------------	----------------------------------	--------------------------------	------------------------	--------------------	-------



3000	JASOP	VGSI and descent angles not coincident (VGSI Angle 3.00/TCH 68).		CTHRN
	XEFJY	2.1 NM to RW20C	1 NM to RW20C	
		3.00° TCH 50		
		1280	2000	3000
		1 NM	1.1 NM	2.2 NM
				6.1 NM
CATEGORY	A	B	C	D
LNAV MDA	960-1	372 (400-1)	960-1½	372 (400-1½)
CIRCLING	1100-1 501 (600-1)	1120-1 521 (600-1)	1200-1¾ 601 (700-1¾)	1380-2½ 781 (800-2½)