

LOC/DME I-BNA 109.9 Chan 36	APP CRS 021°	Rwy Ldg TDZE Apt Elev 7702 599 599
---	------------------------	--

ILS or LOC RWY 2L
NASHVILLE INTL (BNA)

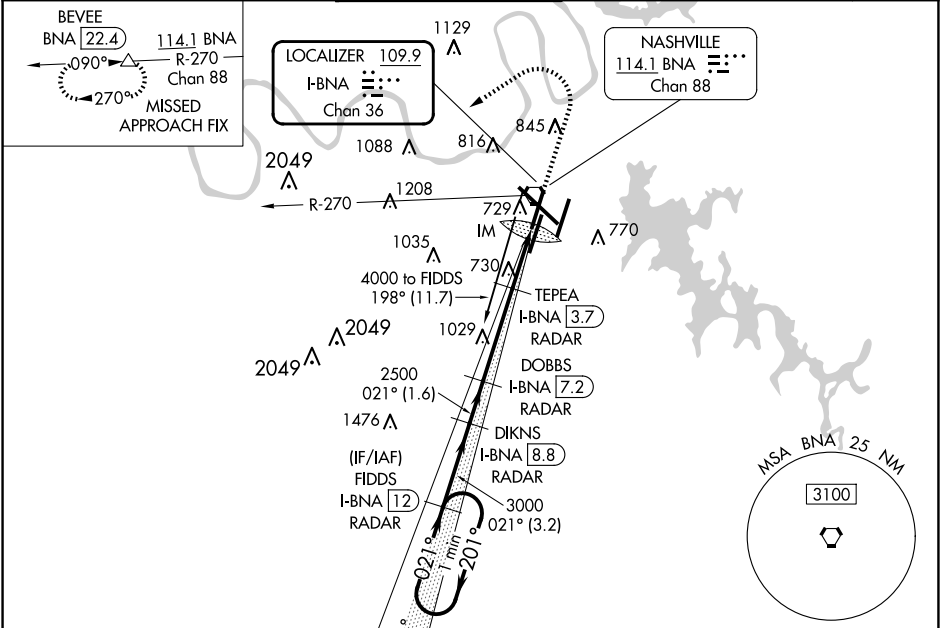
⚠

Simultaneous approach authorized with Rwy 2R.
DME or radar required.

ALSF-2

MISSED APPROACH: Climb to 1200 then climbing left turn to 4000 on heading 240° and on BNA VORTAC R-270 to BEVEE/BNA VORTAC 22.4 DME and hold.

D-ATIS 135.1	NASHVILLE APP CON 118.4 360.7	NASHVILLE TOWER 118.6 257.8	GND CON 121.9 348.6	CLNC DEL 126.05	CPDLC
------------------------	---	---------------------------------------	-------------------------------	---------------------------	-------



DME or RADAR REQUIRED

One Minute Holding Pattern

FIDDS I-BNA [12] RADAR

DIKNS I-BNA [8.8] RADAR

DOBBS I-BNA [7.2] RADAR

TEPEA I-BNA [3.7] RADAR

*I-BNA [2.5] RADAR

I-BNA [1.4] RADAR

4000

201°

021°

021°

2500

3000

1380

2500

1200

4000

BNA R-270

BEVEE

GS 3.00°

TCH 55

3.2 NM

1.6 NM

3.5 NM

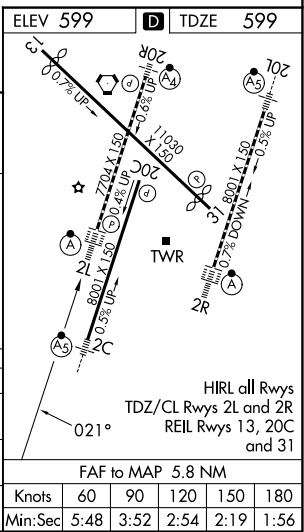
1.3 NM

1 NM

Use I-BNA DME when on the LOC course.

*LOC only.

CATEGORY	A	B	C	D
S-ILS 2L	799/18		200 (200-½)	
S-LOC 2L	980/24	381 (400-½)	980/35	381 (400-¾)
CIRCLING	1100-1 501 (600-1)	1120-1 521 (600-1)	1200-1¾ 601 (700-1¾)	1380-2½ 781 (800-2½)



SE-1, 10 JUL 2025 to 07 AUG 2025

SE-1, 10 JUL 2025 to 07 AUG 2025