

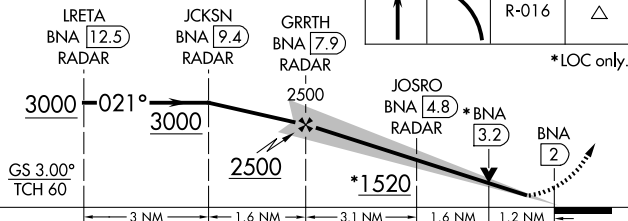
ILS or LOC RWY 2C
NASHVILLE INTL (BNA)


MALSR

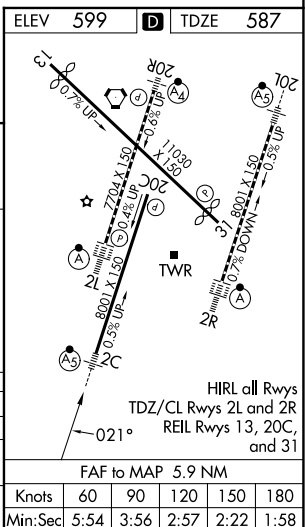
MISSED APPROACH: Climb to 1300 then climbing left turn to 4000 on BNA VORTAC R-016 to TANDS INT/BNA 24.7 and hold.

1300 ↑	4000 ↙	BNA R-016	TANDS △
-----------	-----------	--------------	------------

*LOC only.



CATEGORY	A	B	C	D
S-ILS 2C #	787/24		200 (200-½)	
S-LOC 2C	1000/24	413 (500-½)	1000/40	413 (500-¾)
 CIRCLING	1100-1 501 (600-1)	1120-1 521 (600-1)	1200-1¾ 601 (700-1¾)	1380-2½ 781 (800-2½)



SE-1, 10 JUL 2025 to 07 AUG 2025

SE-1. 10 JUL 2025 to 07 AUG 2025