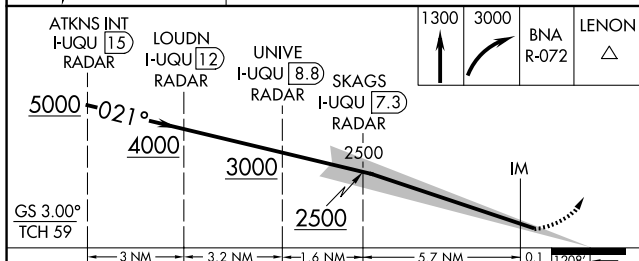
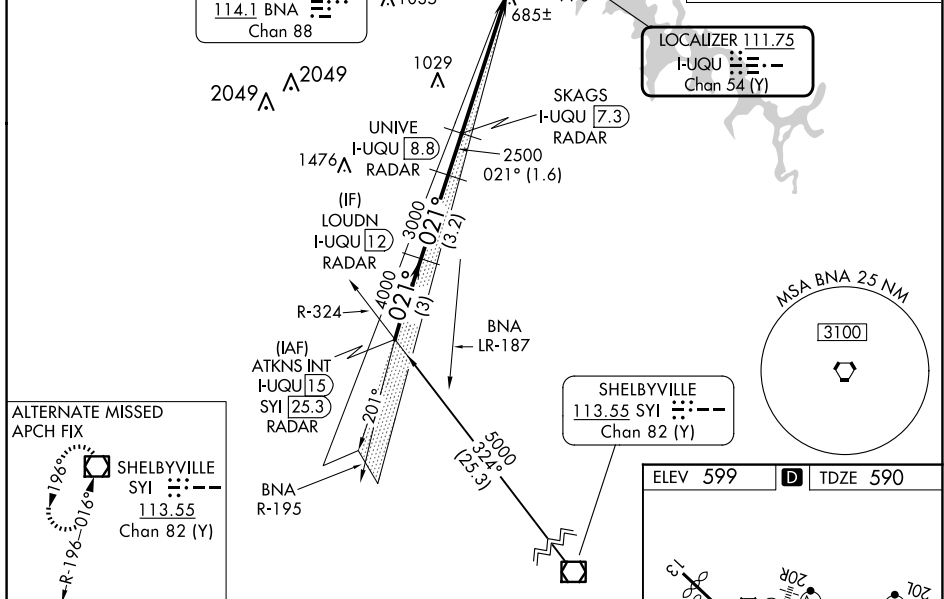


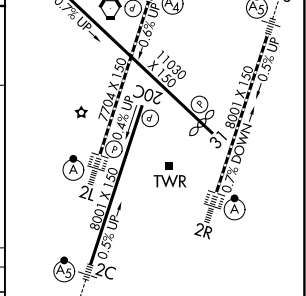
ILS RWY 2R (SA CAT I)
NASHVILLE INTL (BNA)

MISSED APPROACH: Climb to 1300 then climbing right turn to 3000 on BNA R-072 to LENON/BNA 25.1 DME and hold.



CATEGORY	A	B	C	D
S-ILS 2R	RA 121/14 150 DA 740			

SA CATEGORY I ILS - SPECIAL AIRCREW
& AIRCRAFT CERTIFICATION REQUIRED



HIRL all Rwy's
TDZ/CL Rwy's 2L and 2R
REIL Rwy's 13, 20C, and 31

SE-1, 10 JUL 2025 to 07 AUG 2025

SE-1. 10 JUL 2025 to 07 AUG 2025