

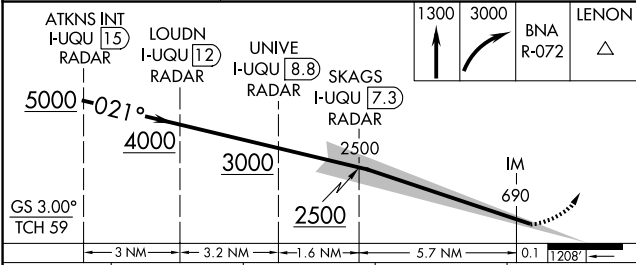
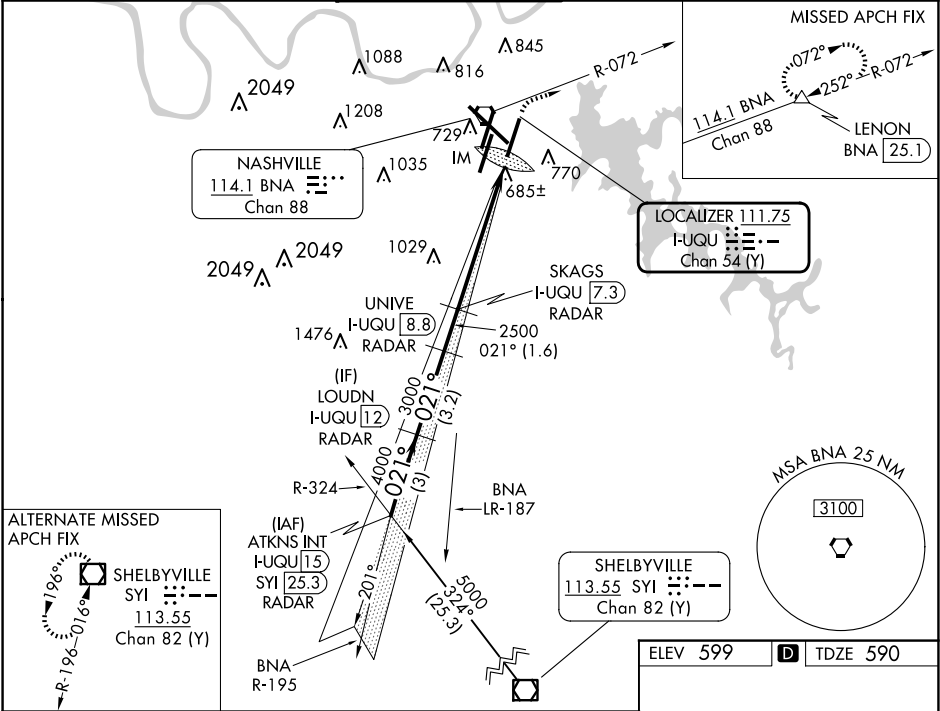


LOC/DME I-UQU <b>111.75</b> Chan <b>54</b> (Y)	APP CRS <b>021°</b>	Rwy Ldg TDZE <b>590</b> Apt Elev <b>599</b>
--	------------------------	---

ILS RWY 2R (CAT II & III)  
NASHVILLE INTL (BNA)

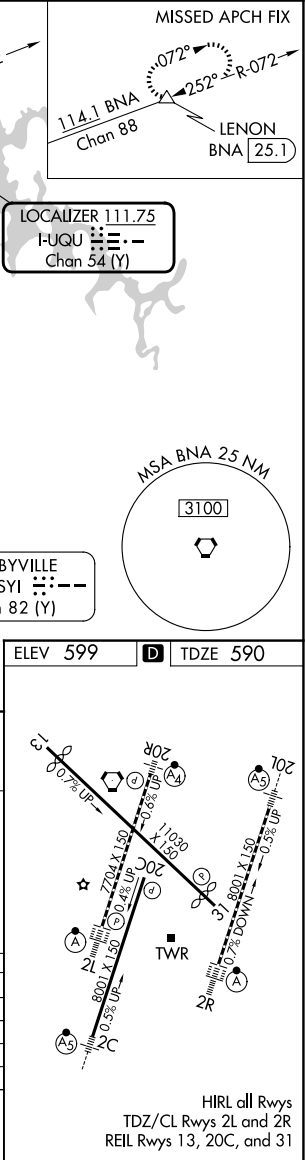
DME required.  Simultaneous approach authorized with Rwy 2L/C.	ALSF-2 	MISSED APPROACH: Climb to 1300 then climbing right turn to 3000 on BNA R-072 to LENON/BNA 25.1 DME and hold.
--	---	--

D-ATIS <b>135.1</b>	NASHVILLE APP CON <b>118.4 360.7</b>	NASHVILLE TOWER <b>118.6 257.8</b>	GND CON <b>121.9 348.6</b>	CLNC DEL <b>126.05</b>	CPDLC
------------------------	---	---------------------------------------	-------------------------------	---------------------------	-------



CATEGORY	A	B	C	D
S-ILS 2R	CAT II	RA 116/12	100	DA 690
S-ILS 2R		CAT IIIa	RVR 07	
S-ILS 2R		CAT IIIb	RVR 06	
S-ILS 2R		CAT IIIc	NA	

CATEGORY II & III ILS - SPECIAL AIRCREW  
& AIRCRAFT CERTIFICATION REQUIRED



SE-1, 10 JUL 2025 to 07 AUG 2025

SE-1, 10 JUL 2025 to 07 AUG 2025