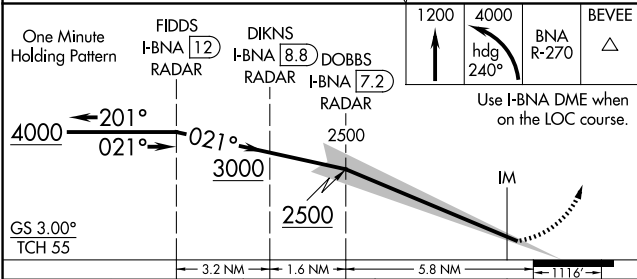
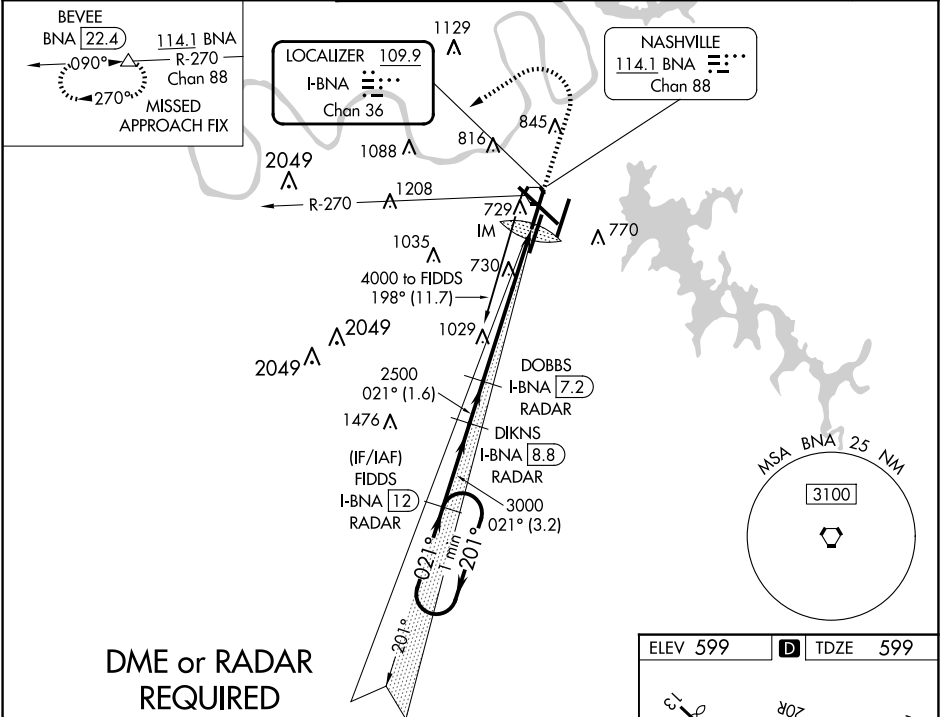


LOC/DME I-BNA <b>109.9</b> Chan <b>36</b>	APP CRS <b>021°</b>	Rwy Ldg TDZE Apt Elev <b>7702</b> <b>599</b> <b>599</b>
---	------------------------	--

ILS RWY 2L (SA CAT I)  
NASHVILLE INTL (BNA)

Simultaneous approach authorized with Rwy 2R. DME or radar required. Requires specific OPSPEC, MSPEC, or LOA approval and use of HUD to DH.	ALSIF-2 	MISSED APPROACH: Climb to 1200 then climbing left turn to 4000 on heading 240° and on BNA VORTAC R-270 to BEVEE/BNA 22.4 DME and hold.
--	-------------	--

D-ATIS <b>135.1</b>	NASHVILLE APP CON <b>118.4 360.7</b>	NASHVILLE TOWER <b>118.6 257.8</b>	GND CON <b>121.9 348.6</b>	CLNC DEL <b>126.05</b>	CPDLC
------------------------	---	---------------------------------------	-------------------------------	---------------------------	-------



CATEGORY	A	B	C	D
S-ILS 2L	RA 159/14 150 DA 749			

**SA CATEGORY I ILS - SPECIAL AIRCREW  
& AIRCRAFT CERTIFICATION REQUIRED**

HIRL all Rwys  
TDZ/CL Rwys 2L and 2R  
REIL Rwys 13, 20C, and 31

SE-1, 10 JUL 2025 to 07 AUG 2025

SE-1, 10 JUL 2025 to 07 AUG 2025