


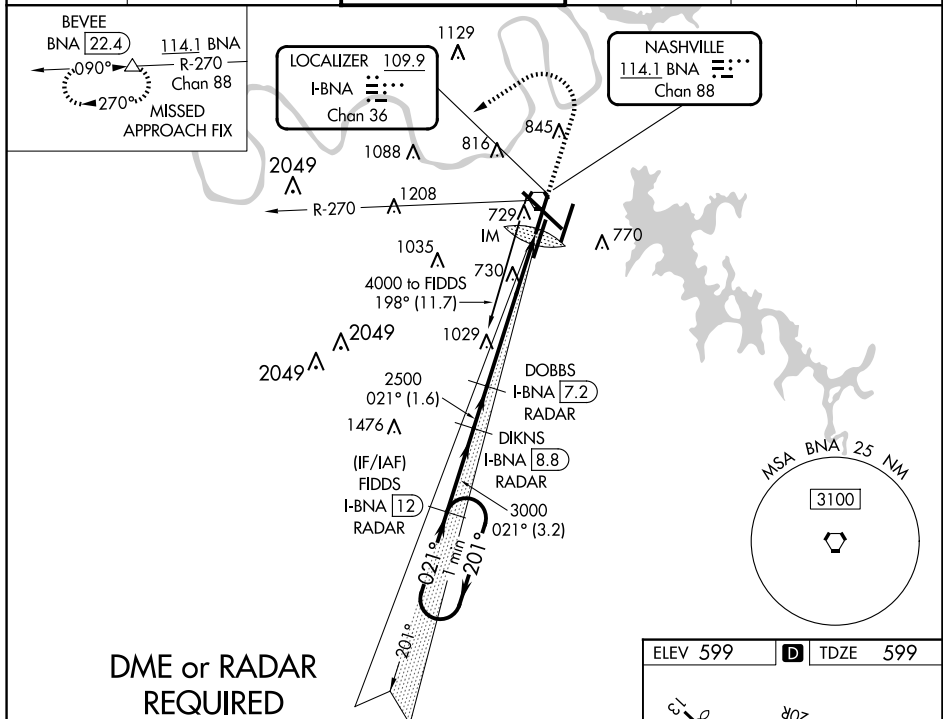


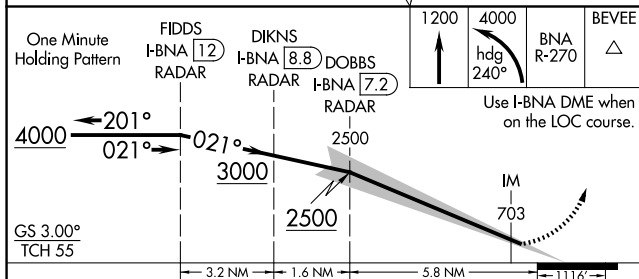
ILS RWY 2L (CAT II & III)
NASHVILLE INTL (BNA)

- | | | |
|--|---|--|
| <p>  Simultaneous approach authorized with Rwy 2R.
  DME or radar required. Cat II: RVR 1000 authorized with specific OPSPEC, MSPEC, or LOA approval and use of Autoland or HUD to touchdown. </p> | <p> ALSF-2
  </p> | <p> MISSED APPROACH: Climb to 1200 then climbing left turn to 4000 on heading 240° and on BNA VORTAC R-270 to BEVEE/BNA 22.4 DME and hold. </p> |
|--|---|--|

D-ATIS 135.1	NASHVILLE APP CON 118.4 360.7	NASHVILLE TOWER 118.6 257.8	GND CON 121.9 348.6	CLNC DEL 126.05	CPDLC
------------------------	---	---------------------------------------	-------------------------------	---------------------------	-------

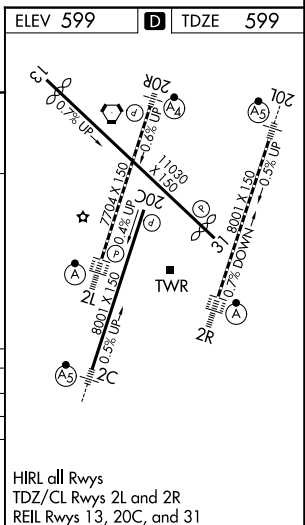


DME or RADAR
REQUIRED



CATEGORY	A	B	C	D
S-ILS 2L	CAT II	RA 104/12	100 DA 699	
S-ILS 2L		CAT III	RVR 600	

CATEGORY II & III ILS - SPECIAL AIRCREW & AIRCRAFT CERTIFICATION REQUIRED



SE-1, 10 JUL 2025 to 07 AUG 2025

SE-1, 10 JUL 2025 to 07 AUG 2025