

WAAS CH 40313 W01B	APP CRS 006°	Rwy Idg 5930 TDZE 17 Apt Elev 36
--	------------------------	---

RNAV (GPS) Z RWY 1L

NAPA COUNTY (APC)

RNP APCH-GPS.

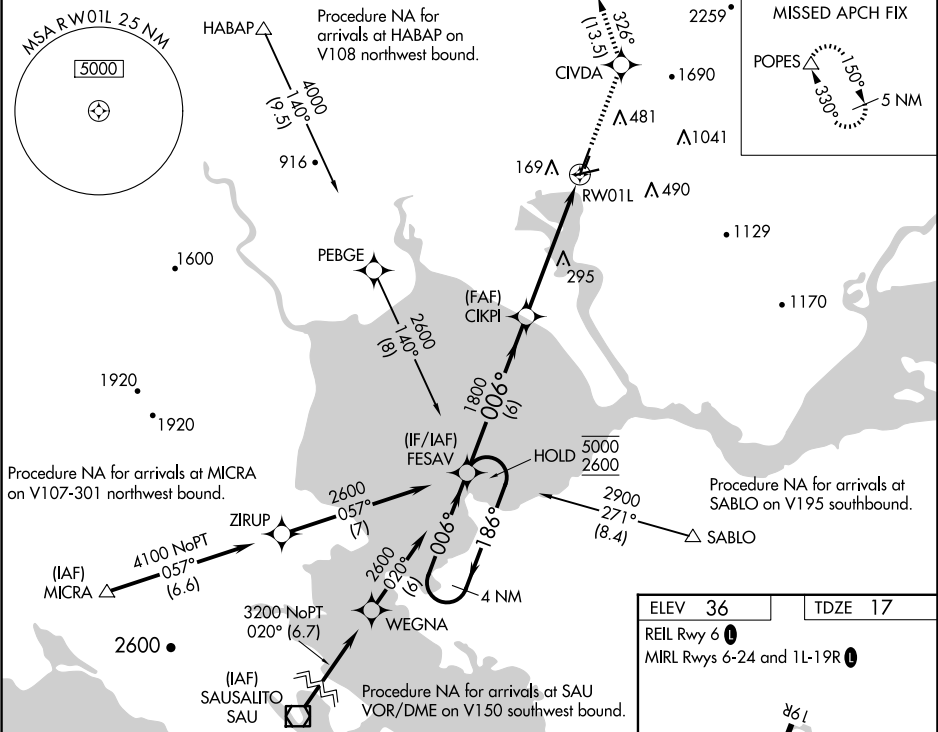
▼

For uncompensated Baro-VNAV systems, LNAV/VNAV NA below -4°C or above 54°C. Inop table does not apply to LPV minimums. For inop ALS, increase visibility LNAV/VNAV to ½ SM. Missed approach requires minimum climb of 420 feet per NM to 2200. If unable to meet climb gradient see RNAV (GPS) Y RWY 1L.

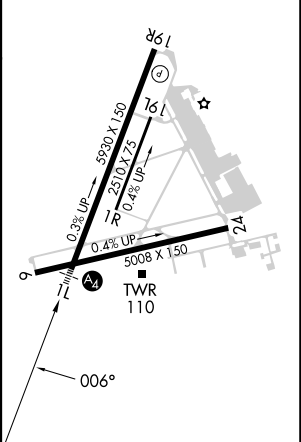
MALS

MISSED APPROACH: Climb to 5000 direct CIVDA and on track 326° to POPES and hold, continue climb-in-hold to 5000.

ATIS 124.05	OAKLAND CENTER 127.8 353.5	NAPA TOWER ★ 118.7 (CTAF) 0 257.8	GND CON 121.7	CLNC DEL 127.85	UNICOM 122.95
-----------------------	--------------------------------------	---	-------------------------	---------------------------	-------------------------



ELEV 36	TDZE 17
REIL Rwy 6 1	
MIRL Rwy 6-24 and 1L-19R 1	



4 NM Holding Pattern		FESAV		CIVDA		POPES	
5000 ← 186°		1800		↑		tr 326°	
2600 → 006°		1800		✱		△	
GP 3.00° TCH 50		1800		*1.7 NM to RW01L		*LNAV only	
		6 NM		3.8 NM		1.7 NM	
CATEGORY	A	B	C	D			
LPV DA	217-¾		200 (200-¾)				
LNAV/ VNAV DA	330-¾		313 (300-¾)				
LNAV MDA	560-¾ 543 (600-¾)		560-1¾ 543 (600-1¾)				