

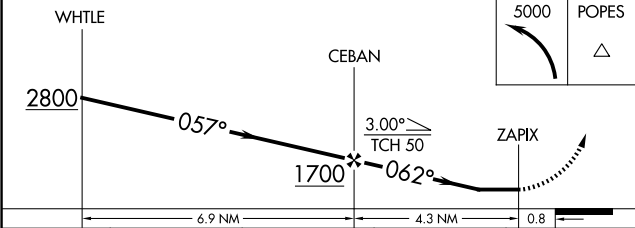
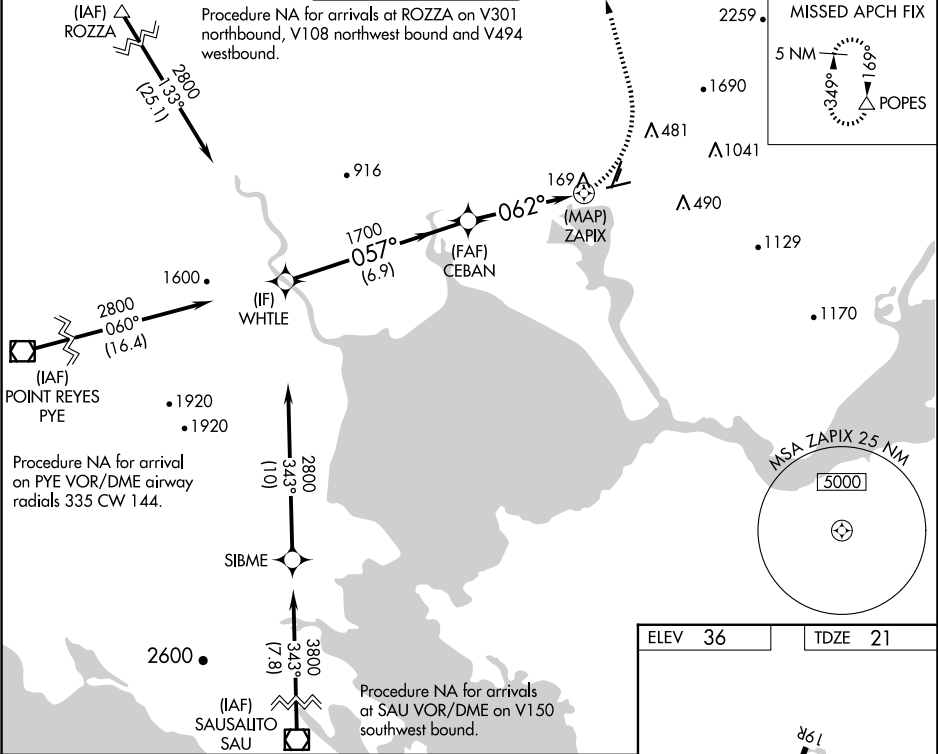
APP CRS	Rwy Idg	5008
062°	TDZE	21
	Apt Elev	36

RNAV (GPS) RWY 6

NAPA COUNTY (APC)

RNP APCH-GPS.	MISSED APPROACH: Climbing left turn to 5000 direct POPES and hold, continue climb-in-hold to 5000. *Missed approach requires minimum climb of 410 feet per NM to 2200.
▼ Rwy 6 helicopter visibility reduction below ¾ SM NA. ▲ Circling Cats A/B/C NA east of Rwy 19R and northwest of Rwy 24. Circling Cat D NA east of Rwy 19L-1R.	

ATIS 124.05	OAKLAND CENTER 127.8 353.5	NAPA TOWER ★ 118.7 (CTAF) 257.8	GND CON 121.7	CLNC DEL 127.85	UNICOM 122.95
----------------	-------------------------------	------------------------------------	------------------	--------------------	------------------



CATEGORY	A	B	C	D
LNAV MDA*	480-1	459 (500-1)	480-1 3/8	459 (500-1 3/8)
LNAV MDA	1340-1 1/4 1319 (1400-1 1/4)	1340-1 1/2 1319 (1400-1 1/2)	1340-3	1319 (1400-3)
CIRCLING	1340-1 1/4 1304 (1400-1 1/4)	1340-1 1/2 1304 (1400-1 1/2)	1340-3	1304 (1400-3)

