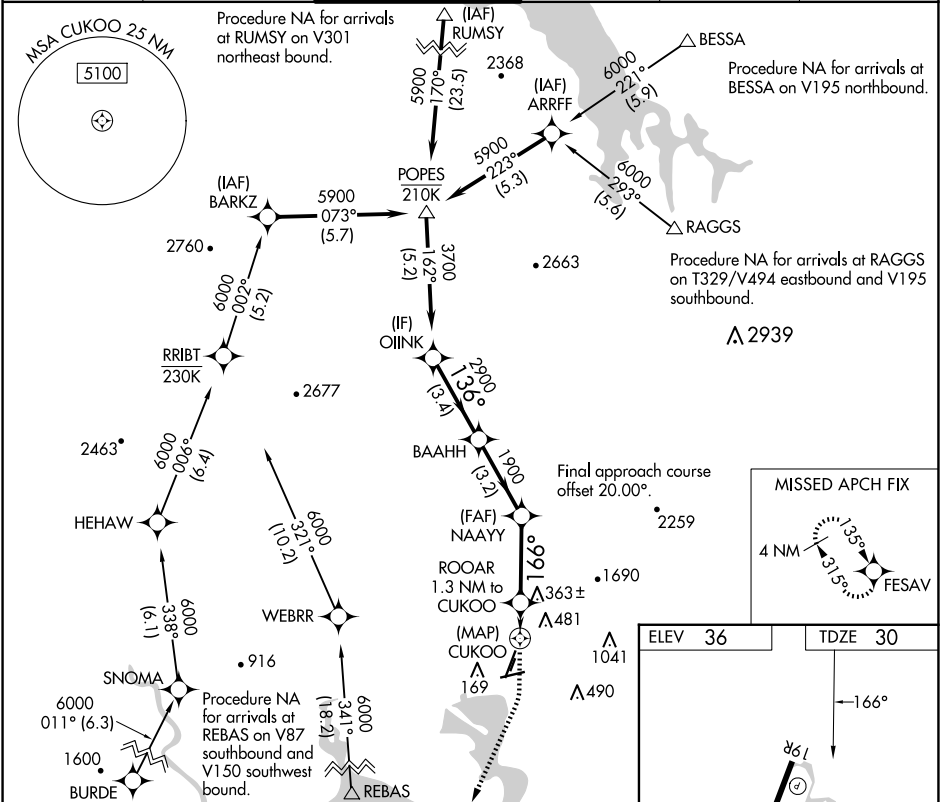


APP CRS	Rwy Idg	5930
166°	TDZE	30
	Apt Elev	36

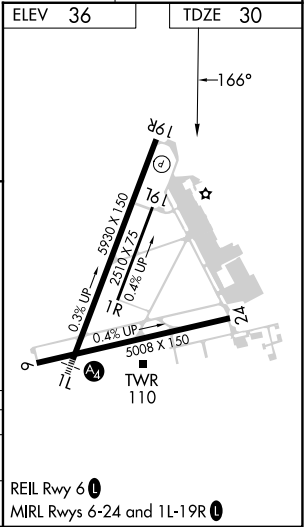
RNAV (GPS) RWY 19R  
NAPA COUNTY (APC)

RNP APCH - GPS.	MISSED APPROACH: Climb to 700 then climbing right turn to 3000 direct FESAV and hold.
<div><div>▼</div><div>⚠</div></div> Rwy 19R helicopter visibility reduction below ¾ SM NA. Circling Cats A/B/C NA east of Rwy 19R and northwest of Rwy 24. Circling Cat D NA east of Rwy 19L-1R.	

ATIS 124.05	OAKLAND CENTER 127.8 353.5	NAPA TOWER ★ 118.7 (CTAF) 257.8	GND CON 121.7	CLNC DEL 127.85	UNICOM 122.95
----------------	-------------------------------	------------------------------------	------------------	--------------------	------------------



700	3000	FESAV	VGSI and descent angles not coincident (VGSI Angle 3.25/TCH 52).			
↑	↶	✧	ROOAR 1.3 NM to CUKOO	NAAYY	BAAHH	OIINK
↶	↶	↶	CUKOO	166°	136°	3700
0.5	1.3 NM	3.1 NM	3.2 NM	3.4 NM		
CATEGORY	A	B	C	D		
LNNAV MDA	680-1	650 (700-1)	680-1 7/8	650 (700-1 7/8)		
CIRCLING	680-1	644 (700-1)	1280-3 1244 (1300-3)	1300-3 1264 (1300-3)		



SW-2, 10 JUL 2025 to 07 AUG 2025

SW-2, 10 JUL 2025 to 07 AUG 2025