

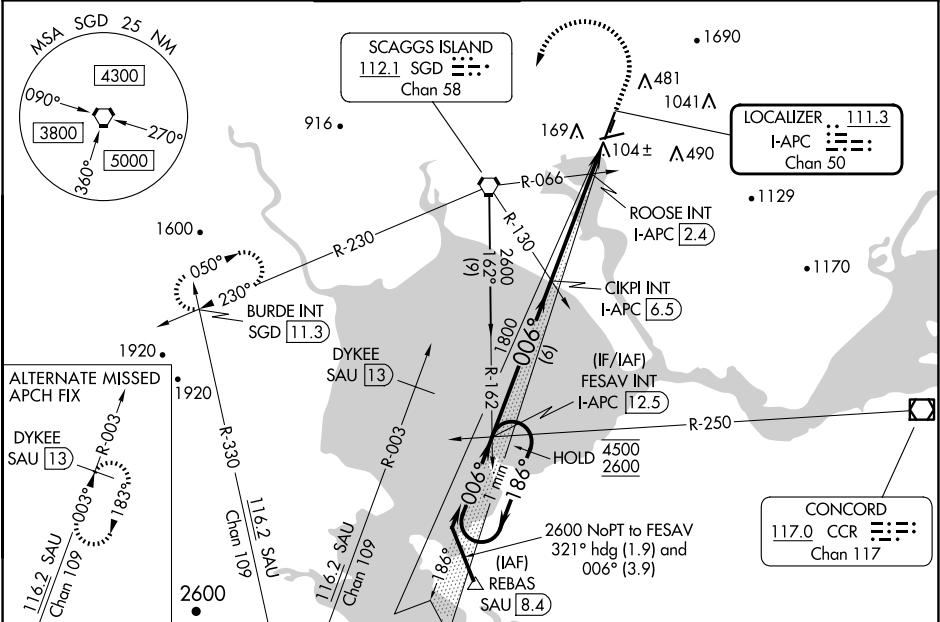
LOC/DME I-APC	APP CRS	Rwy Idg	5930
111.3	006°	TDZE	17
Chan 50		Apt Elev	36

ILS or LOC Z RWY 1L  
NAPA COUNTY (APC)

Autopilot coupled approach NA below 530. Inop table does not apply to S-ILS 1L. Circling Cat A/B/C NA northeast of Rwy 19R and 24. Circling Cat D NA east of Rwy 19L-1R. Circling Rwy 6 NA at night.

MALS MISSED APPROACH: Climb to 500 then climbing left turn to 3200 direct SGD VORTAC and on SGD VORTAC R-230 to BURDE INT/SGD 11.3 DME and hold, continue climb-in-hold to 3200.

ATIS	OAKLAND CENTER	NAPA TOWER ★	GND CON	CLNC DEL	UNICOM
124.05	127.8 353.5	118.7 (CTAF) 257.8	121.7	127.85	122.95



One Minute Holding Pattern		FESAV INT I-APC 12.5	500	3200	SGD	SGD	BURDE INT	ELEV 36	TDZE 17
			↑	↷	⬡	R-230		MIRL Rwy 6-24 and 1L-19R 1	
4500 ← 186°								REIL Rwy 6 1	
2600 → 006°									
GS 3.00° TCH 50									
1800									
6 NM									
4.1 NM									
1.4 NM									
CATEGORY	A	B	C	D					
S-ILS 1L	217-3/4		200 (200-3/4)						
S-LOC 1L	500-3/4		483 (500-3/4)		500-1 1/8		483 (500-1 1/8)		
CIRCLING	600-1	680-1	1280-3	1300-3					
	564 (600-1)	644 (700-1)	1244 (1300-3)	1264 (1300-3)					
ROOSE FIX MINIMUMS (DUAL VOR RECEIVERS OR DME REQUIRED)									
S-LOC 1L	360-3/4		343 (400-3/4)						
CIRCLING	600-1	680-1	1280-3	1300-3					
	564 (600-1)	644 (700-1)	1244 (1300-3)	1264 (1300-3)					

FAF to MAP 5.5 NM				
Knots	60	90	120	150
Min:Sec	5:30	3:40	2:45	2:12
	1:50			