
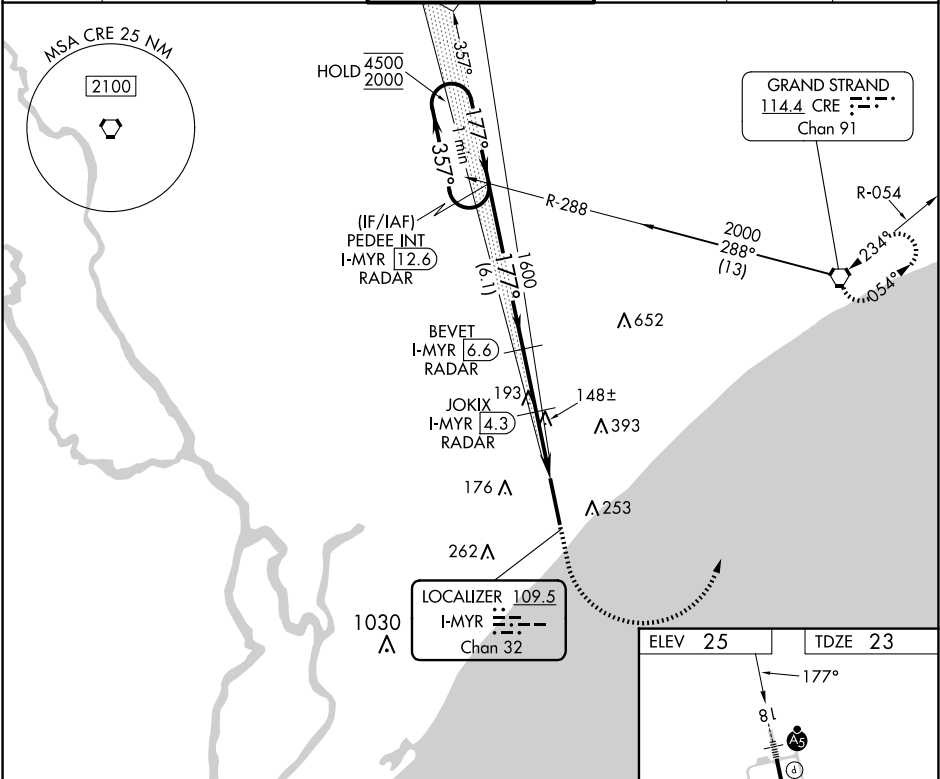


LOC/DME I-MYR	APP CRS	Rwy Idg	9503
109.5	177°	TDZE	23
Chan 32		Apt Elev	25

ILS or LOC RWY 18

MYRTLE BEACH INTL (MYR)

DME required.		<div>MALSR</div> <div></div>	MISSED APPROACH: Climb to 1700 then climbing left turn to 3000 direct CRE VORTAC and hold.		
<div><div><div><div></div></div><div></div></div><div>For inop ALS, increase S-ILS 18 Cat E visibility to RVR 4000 and S-LOC 18 Cats C/D/E visibility to RVR 5500.</div><div><div></div><div>*RVR 1800 authorized with use of FD or AP or HUD to DA.</div></div></div>					
ATIS	MYRTLE BEACH APP CON ★ (171° - 321°) 127.4 257.95 (322° - 170°) 119.2 350.3	MYRTLE BEACH TOWER ★ 128.45 (CTAF) 0 259.3	GND CON 120.3 275.8	CLNC DEL 120.3	UNICOM 122.95



One Minute Holding Pattern		VGSI and ILS glidepath not coincident (VGSI Angle 3.00/TCH 64).		1700	3000	CRE
PEDEE INT I-MYR 12.6 RADAR		BEVET I-MYR 6.6 RADAR		JOKIX I-MYR 4.3 RADAR		
4500 ← 357°		177° →		177°		
2000		1600		860		
GS 3.00° TCH 52		6.1 NM		2.3 NM		
CATEGORY		A		B		
S-ILS 18 *		223/24		200 (200-½)		
S-LOC 18		400/24		377 (400-½)		
CIRCLING		560-1		535 (600-1)		
		700-2		675 (700-2)		
		700-2¼		675 (700-2¼)		
		700-2½		675 (700-2½)		
				HIRL Rwy 18-36		