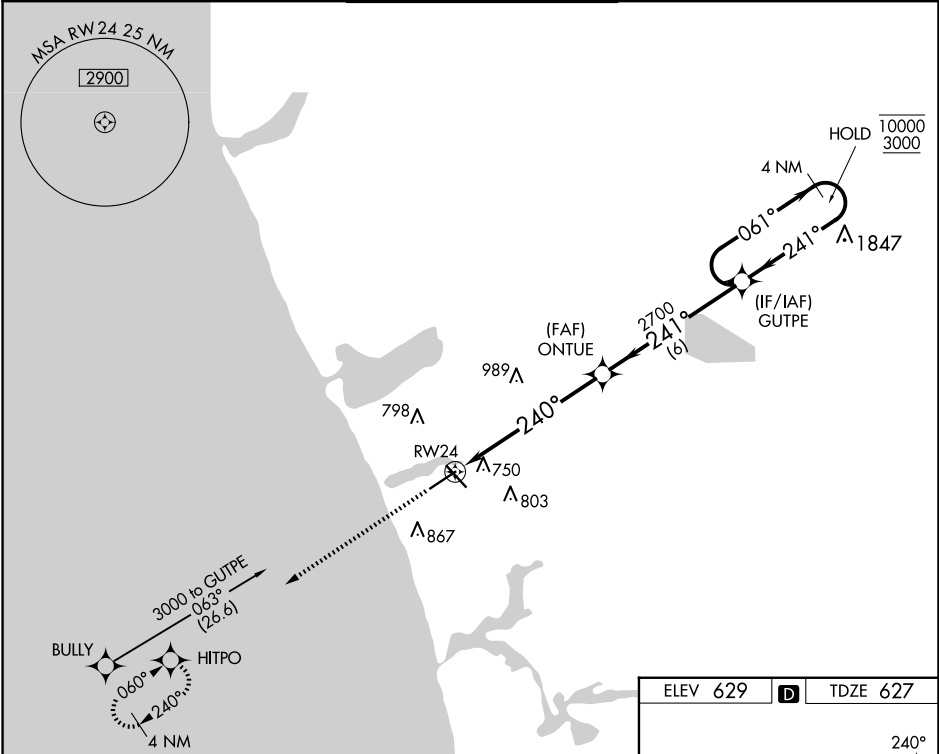


WAAS CH 42918 W24A	APP CRS 240°	Rwy Ldg TDZE Apt Elev	6500 627 629
--	------------------------	-----------------------------	---

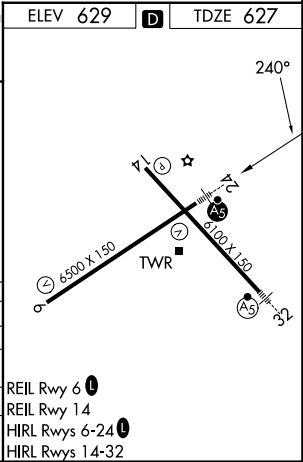
RNAV (GPS) RWY 24
MUSKEGON COUNTY (MKG)

RNP APCH. For uncompensated Baro-VNAV systems, LNAV/VNAV NA below -18°C or above 54°C. For inop ALS, increase LPV visibility all Cats to ¾ SM, LNAV/VNAV visibility all Cats to 1¾ SM, LNAV Cats A/B to 1 SM and LNAV Cats C/D to 1¾ SM.	MALSR 	MISSED APPROACH: Climb to 3000 direct HITPO and hold.
---	-----------	--

ATIS 124.3	GREAT LAKES APP CON* 119.8 290.35 (North) 133.825 290.35 (South)	MUSKEGON TOWER* 126.25 (CTAF) 343.725	GND CON 121.6	UNICOM 122.95
----------------------	--	--	-------------------------	-------------------------



3000 ↑ HITPO	*LNAV only	ONTUE	GUTPE	4 NM Holding Pattern
*1.2 NM to RW24		2700	2700	061° → 10000 ← 241° 3000
RW24				GP 3.00° TCH 56
1.2	5.1 NM	6 NM		
CATEGORY	A	B	C	D
LPV DA		827-½	200 (200-½)	
LNAV/VNAV DA		1092-1	465 (500-1)	
LNAV MDA	1080-½	453 (500-½)	1080-¾	453 (500-¾)
CIRCLING	1080-1 451 (500-1)	1180-1 551 (600-1)	1200-1½ 571 (600-1½)	1200-2 571 (600-2)



EC-1, 10 JUL 2025 to 07 AUG 2025

EC-1, 10 JUL 2025 to 07 AUG 2025