
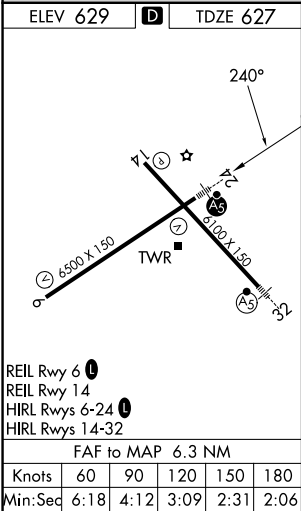
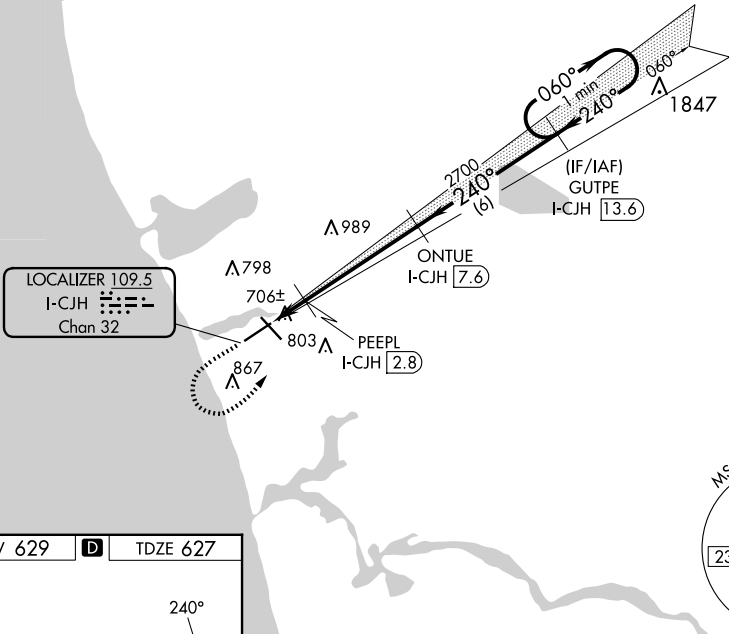


LOC/DME I-CJH 109.5 Chan 32	APP CRS 240°	Rwy Ldg TDZE 6500 627 Apt Elev 629
---	------------------------	--

ILS or LOC RWY 24
MUSKEGON COUNTY (MKG)

<div><div>▼</div><div>▲</div></div> <div>DME required. RADAR required. RNAV 1-GPS required.</div>		<div>MALSR</div> <div></div>	<div>MISSED APPROACH: Climb to 2500 then climbing left turn to 3000 direct GUTPE and hold.</div>		
<div>ATIS</div> <div>124.3</div>	<div>GREAT LAKES APP CON★</div> <div><div>119.8 290.35</div><div>133.825 290.35</div></div> <div>(North) (South)</div>	<div>MUSKEGON TOWER★</div> <div><div>126.25 (CTAF)</div><div>0 343.725</div></div>		<div>GND CON</div> <div>121.6</div>	<div>UNICOM</div> <div>122.95</div>

RADAR REQUIRED



	2500	3000	GUTPE I-CJH 13.6	* LOC only	
			ONTUE I-CJH 7.6		One Minute Holding Pattern
			PEEPL I-CJH 2.8		
			I-CJH 1.3		
			* I-CJH 2.1		
			* 1160		
			2700		
			2700		
			240°		
			060°		
			3000		
			GS 3.00°		
			TCH 56		
			0.9		
			0.6		
			4.8 NM		
			6 NM		
CATEGORY	A	B	C	D	
S-ILS 24		827-½	200 (200-½)		
S-LOC 24		960-½	333 (400-½)		
CIRCLING	1080-1 451 (500-1)	1180-1 551 (600-1)	1200-1½ 571 (600-1½)	1200-2 571 (600-2)	