

23222

RNAV (GPS) RWY 30  
NORTHWEST ALABAMA RGNL (MSL)

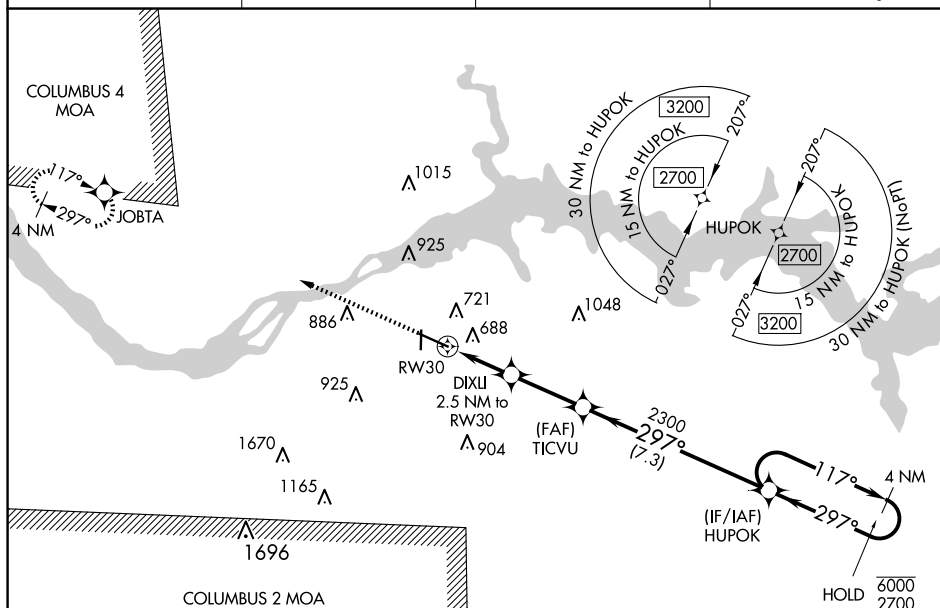
MALSR



A5

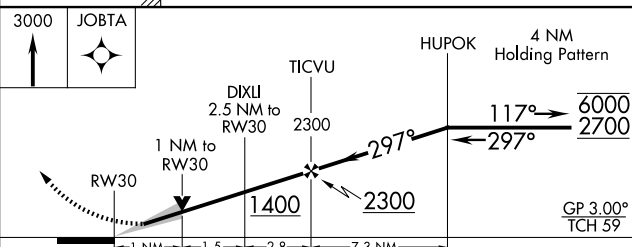
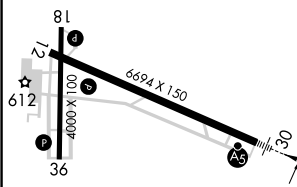
Ground symbol

**MISSED APPROACH:**  
Climb to 3000 direct  
JOBTA and hold.

UNICOM  
123.05 (CTAF) **L**



3000	JOBTA
	



CATEGORY		A		B		C		D	
LPV	DA	751- $\frac{1}{2}$				200 (200- $\frac{1}{2}$ )			
LNAV/ VNAV	DA	962- $\frac{3}{4}$				411 (500- $\frac{3}{4}$ )			
LNAV	MDA	940- $\frac{1}{2}$ 389 (400- $\frac{1}{2}$ )				940- $\frac{5}{8}$ 389 (400- $\frac{5}{8}$ )			
<b>C</b>	CIRCLING	1040-1 489 (500-1)				1280-2 729 (800-2)		1280-2 $\frac{1}{4}$ 729 (800-2 $\frac{1}{4}$ )	

NORTHWEST ALABAMA RGNL (MSL)  
RNAV (GPS) RWY 30