

WAAS CH <b>90518</b> <b>W12A</b>	APP CRS <b>117°</b>	Rwy Idg <b>6694</b> TDZE <b>544</b> Apt Elev <b>551</b>
--	------------------------	---

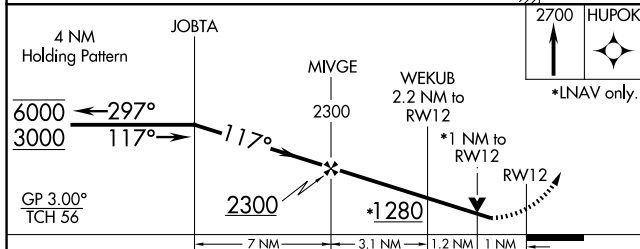
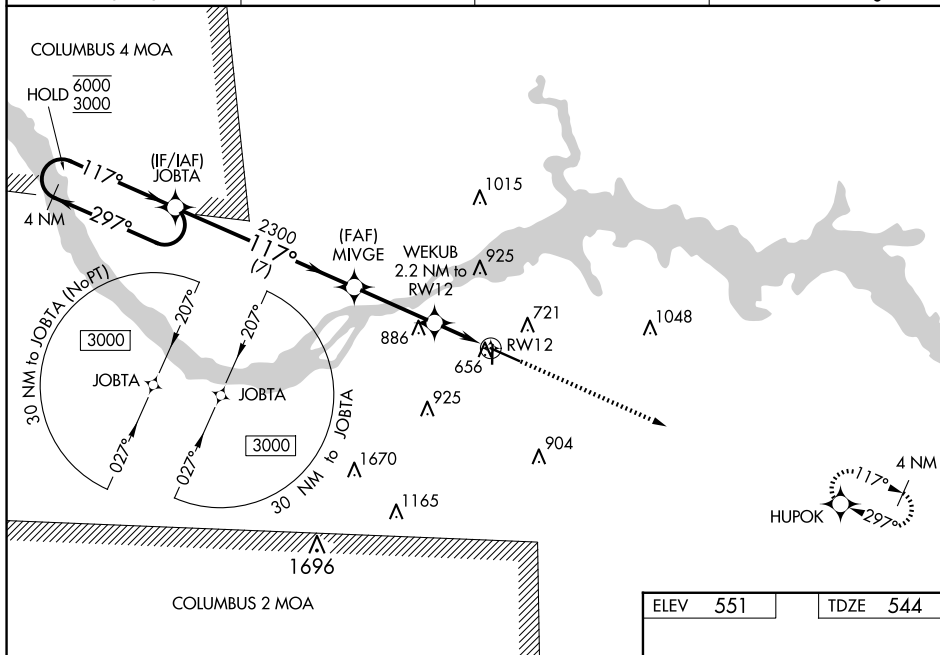
RNAV (GPS) RWY 12  
NORTHWEST ALABAMA RGNL (MSL)

RNP APCH.

**⚠** Rwy 12 helicopter visibility reduction below  $\frac{3}{4}$  SM NA. For uncompensated Baro-VNAV systems, LNAV/VNAV NA below -4°C or above 54°C. When local altimeter setting not received use Decatur altimeter setting and increase LPV DA to 934 feet, LNAV/VNAV DA to 1025 feet and all MDA 100 feet; increase LPV all Cats visibility  $\frac{1}{4}$  SM, LNAV/VNAV all Cats visibility  $\frac{3}{8}$  SM, LNAV Cat C and D visibility  $\frac{3}{8}$  SM and Circling Cat C and D visibility  $\frac{1}{2}$  SM. Baro-VNAV and VDP NA when using Decatur altimeter setting.

**MISSED APPROACH:**  
Climb to 2700 direct  
HUPOK and hold.

ASOS <b>119.425</b>	MEMPHIS CENTER <b>120.8 307.0</b>	GCO <b>121.725</b>	UNICOM <b>123.05 (CTAF) L</b>
------------------------	--------------------------------------	-----------------------	----------------------------------



CATEGORY	A	B	C	D
LPV DA	851-1		307 (300-1)	
LNAV/VNAV DA	942-1¼		398 (400-1¼)	
LNAV MDA	920-1		376 (400-1)	
<b>C</b> CIRCLING	1040-1	489 (500-1)	1280-2 729 (800-2)	1280-2¼ 729 (800-2¼)

REIL Rwy 12 **L**  
MIRL Rwy 18-36 **L**  
HIRL Rwy 12-30 **L**