

LOC I-MSL	APP CRS	Rwy Idg	6694
109.7	297°	TDZE	551
		Apt Elev	551

ILS Z or LOC Z RWY 30

NORTHWEST ALABAMA RGNL (MSL)

DME required. RADAR required.

▼

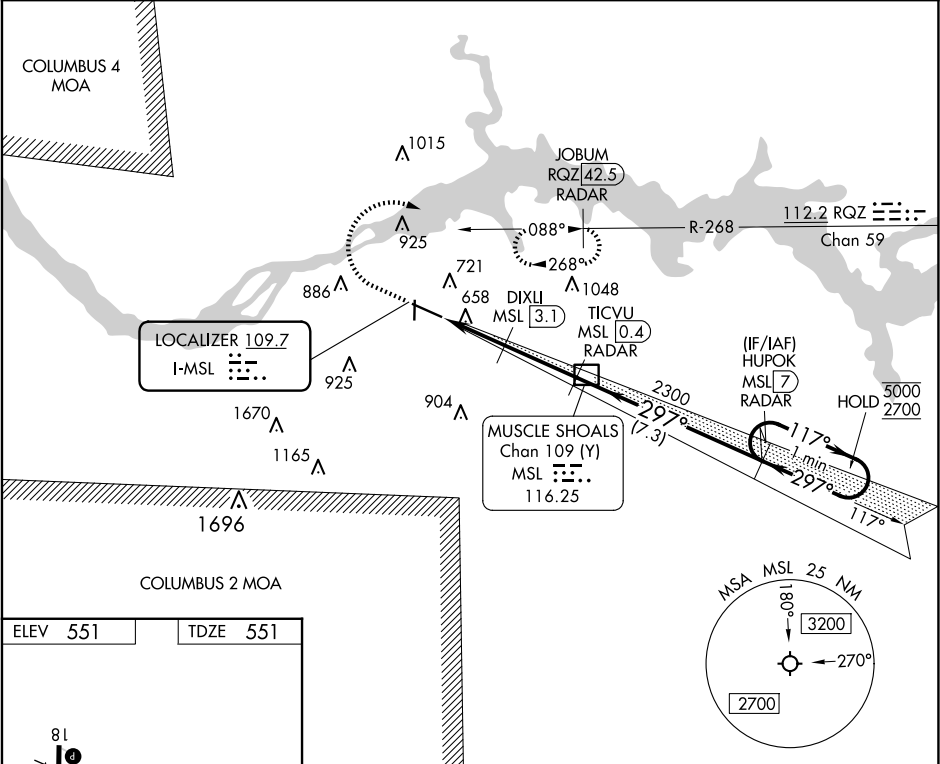
▲

DME from MSL DME.
Simultaneous reception of I-MSL and MSL DME required.
For inop ALS increase S-LOC 30 Cats C/D visibility to 1 SM.

MALSR

MISSED APPROACH: Climb to 1200 then climbing right turn to 3000 on heading 020° to intercept RQZ VORTAC R-268 to JOBUM/RQZ VORTAC 42.5 DME/RADAR and hold, continue climb-in-hold to 3000.

ASOS	MEMPHIS CENTER	GCO	UNICOM
119.425	120.8 307.0	121.725	123.05 (CTAF) 0



ELEV 551

TDZE 551

81

12

612

36

4000 X 100

6694 X 150

AS

30

297°

1200

3000

hdg 020°

RQZ R-268

JOBUM RQZ 42.5 RADAR

DIXLI MSL 3.1

TICVU MSL 0.4 RADAR

MSL DME

HUPOK MSL 7 RADAR

One Minute Holding Pattern

117°

297°

5000

2700

GS 3.00°

TCH 59

1 NM

1.5 NM

2.8 NM

7.3 NM

CATEGORY	A	B	C	D
S-ILS 30	751-1/2		200 (200-1/2)	
S-LOC 30	920-1/2 369 (400-1/2)		920-5/8 369 (400-5/8)	
CIRCLING	1040-1 489 (500-1)		1280-2 729 (800-2)	1280-2 1/4 729 (800-2 1/4)