

MT. CLEMENS, MICHIGAN

TACAN Z RWY 19

TACAN MTC

Chan 64

APCH CRS

177°

Rwy Idg

9000

TDZE

579

Arpt Elev

580

[USAF]

SELFREDGE ANGB (KMTC)

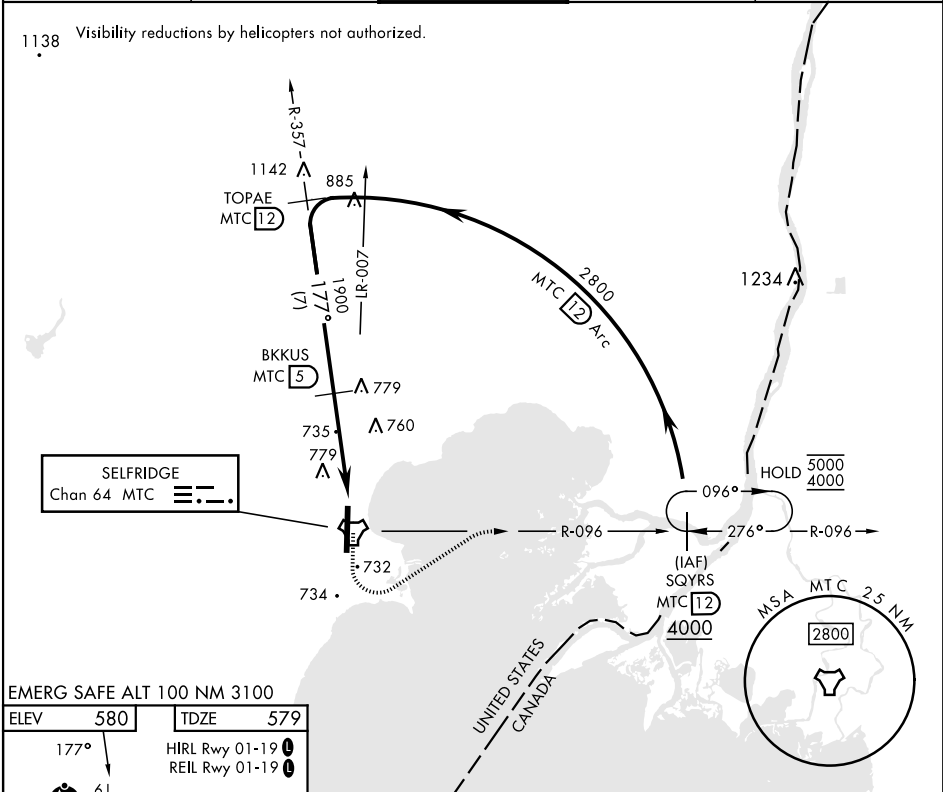
✚

* When ALS inop, increase CAT AB RVR to 55, vis to 1 mile, CAT CDE vis to 1½ miles.
** Circling not authorized W of Rwy 01-19.

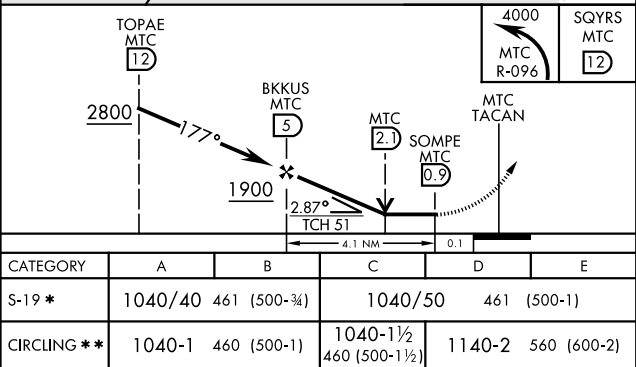
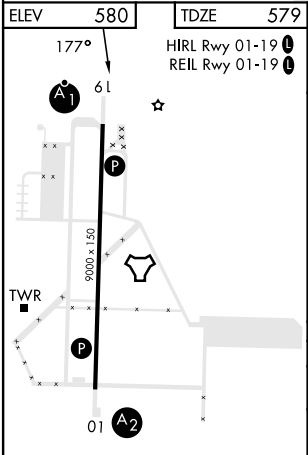
ALSF-1

MISSED APPROACH: Climbing left turn to 4000, intercept MTC R-096 to SQYRS and hold, continue climb-in-hold to 4000.

ATIS 125.325 270.1	SELFREDGE APP CON 119.6 318.2	SELFREDGE TOWER ★ 120.15 (CTAF) 225.4	GND CON 128.3 275.8	CLNC DEL 128.3 275.8
-----------------------	----------------------------------	--	------------------------	-------------------------



EMERG SAFE ALT 100 NM 3100



MT. CLEMENS, MICHIGAN

42°37'N-82°50'W

SELFREDGE ANGB (KMTC)

Amtd 4 26DEC24

TACAN Z RWY 19

EC-1, 10 JUL 2025 to 07 AUG 2025

EC-1, 10 JUL 2025 to 07 AUG 2025