
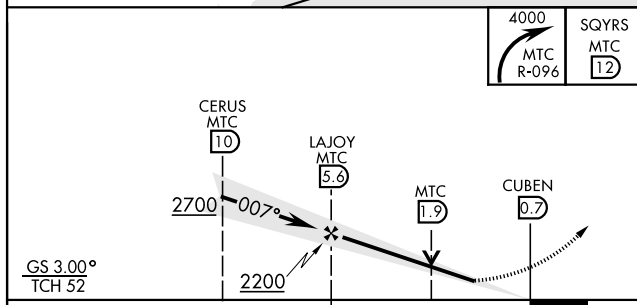
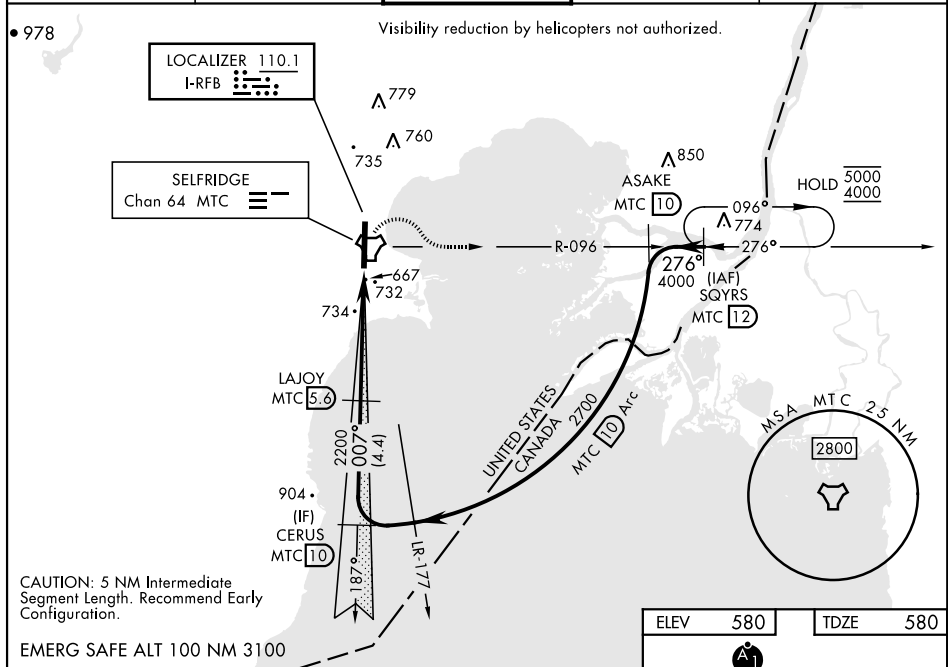


ILS or LOC Z RWY 1

LOC 1-RFB <b><u>110.1</u></b>	APCH CRS <b>007°</b>	Rwy Idg <b>9000</b> TDZE <b>580</b> Arpt Elev <b>580</b>	[USAF]	SELF RIDGE ANGB (KMTCT)
<b>▼</b> * When ALS inop, increase RVR to 45, vis to 7/8 mile. <b>**</b> When ALS inop, increase CAT AB RVR to 55 and vis to 1 mile; CAT CDE RVR to 60, vis to 1 1/8 miles. <b>***</b> Circling not authorized W of Rwy 01-19.			SALS 	MISSED APPROACH: Climbing right turn to 4000, intercept MTC R-096 to SQYRS and hold, continue climb-in-hold to 4000.

ATIS 125.325 270.1	SELFRIDGE APP CON 119.6 318.2	SELFRIDGE TOWER ★ 120.15 (CTAF) 0 225.4	GND CON 128.3 275.8	CLNC DEL 128.3 275.8
-----------------------	----------------------------------	--	------------------------	-------------------------



CATEGORY	A	B	C	D	E
S-LS 01*	873/40		293	(300-¾)	
S-LOC 01**	1000/40	420 (500-¾)	1000/50	420	(500-1)
CIRCLING***	1040-1	460 (500-1)	1040-1½ 460 (500-1½)	1140-2	560 (600-2)

