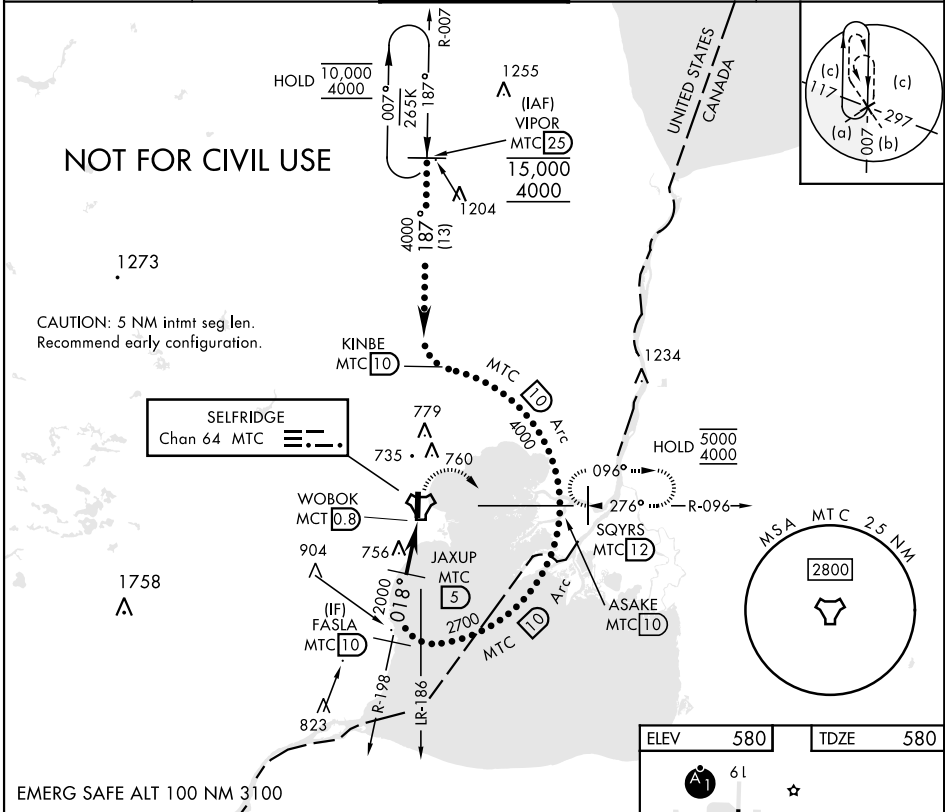


TACAN MTC Chan 64	APCH CRS 018°	Rwy Idg TDZE 580 Arpt Elev 580	[USAF]	SELFDRIDGE ANGB (KMTC)
* When ALS inop, increase vis to 1 3/4 miles. ** Circling not authorized W of Rwy 01-19.				
SALS A2		MISSED APPROACH: Climbing right turn to 4000, intercept MTC R-096 to SQYRS and hold, continue to climb in hold to 4000.		

ATIS 125.325 270.1	APP CON 119.6 318.2	TOWER ★ 120.15 (CTAF) 0 255.4	GND CON 128.3 275.8	CLNC DEL 128.3 275.8
-----------------------	------------------------	----------------------------------	------------------------	-------------------------



FASLA MTC 10		JAXUP MCT 5	WOBOK MCT 0.8	SQYRS MCT 12
2700		2000	4000	MTC R-096
018°		018°	018°	
3.01°		3.01°	3.01°	
TCH 51		TCH 51	TCH 51	
4.2 NM		4.2 NM	4.2 NM	
CATEGORY	C	D	E	
S-1*	1040/55	460	(500-1)	
CIRCLING **	1040-1 1/2 460 (500-1 1/2)	1140-2	560 (600-2)	

