

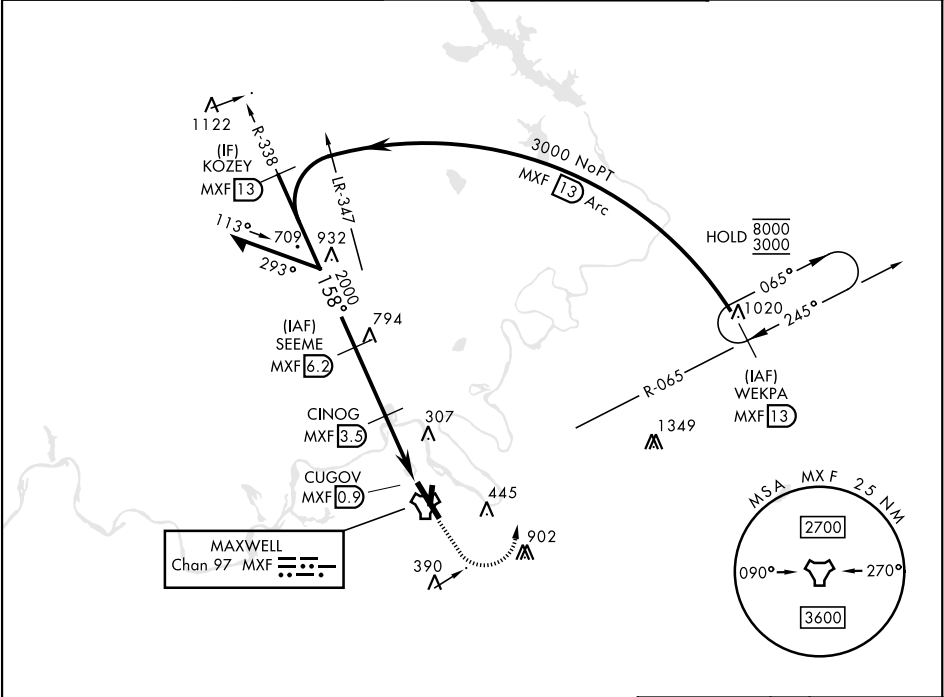
TACAN RWY 15

TACAN MXF	APCH CRS	Rwy ldg
Chan 97	158°	TDZE 171
		Arpt Elev 171

[USAF]

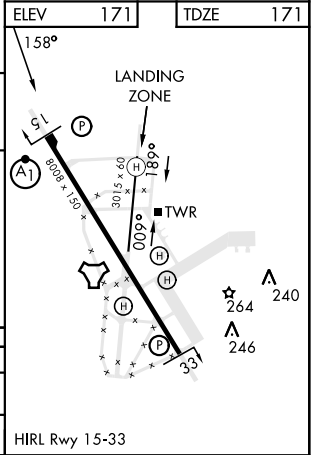
MAXWELL AFB (KMXF)

RADAR required for missed approach.		ALSF-1	MISSED APPROACH: Climb to 1000, then climbing left turn to 3000 to intercept MXF TACAN R-065 outbound to 13 DME (WEKPA) and hold.
* When ALS inop, increase CAT AB RVR to 55 and vis to 1 mile, CAT CDE and vis to 1½ miles. ** Circling not authorized E of Rwy 15-33.			
ATIS ★	MONTGOMERY APP CON ★	TOWER ★	GND CON ★
134.7 269.9	121.2 269.05 (N) 124.0 363.025 (S)	118.15 253.5	127.15 289.4



EMERG SAFE ALT 100 NM 5000

Remain within 15 NM		KOZEY MXF 13	SEEME MXF 6.2	1000	3000	WEKPA R-065 MXF 13
CINOG to RWY 15 3.08° TCH 51		338°	158°	2000	1100	MXF TACAN
		2.7 NM	2.6 NM	0.2		
CATEGORY	A	B	C	D	E	
S-15 *	620/24	449 (500-½)	620/45	449 (500-7/8)		
CIRCLING **	680-1	509 (600-1)	700-1½ 529 (600-1½)	920-2½ 749 (800-2½)	NA	



TACAN RWY 15

SE-4, 10 JUL 2025 to 07 AUG 2025

SE-4, 10 JUL 2025 to 07 AUG 2025