

WAAS  
CH **56200**  
**W28A**

APP CRS  
**277°**

Rwy Idg  
TDZE  
Apt Elev

**9020**  
**197**  
**232**

**RNAV (GPS) RWY 28**

MONTGOMERY RGNL (DANNELLY FLD) (MGM)

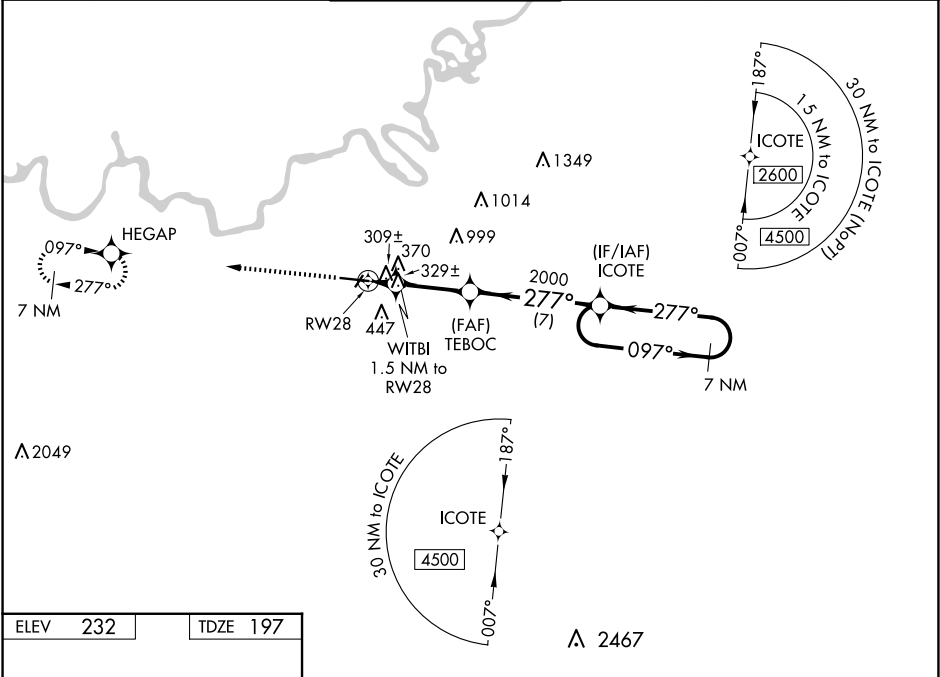
RNP APCH-GPS.

MALSRLPVS

For uncompensated Baro-VNAV systems, LNAV/VNAV NA below -8°C or above 54°C. For inop MALSRLPVS, increase LPV Cat E visibility to ¾ mile; increase LNAV/VNAV Cat E visibility to 1½ mile. Circling for Cat E NA north of Rwy 10-28.

MISSED APPROACH:  
Climb to 3100 direct HEGAP and hold.

ATIS <b>120.675</b>	MONTGOMERY APP CON ★ <b>124.0 363.025</b>	DANNELLY TOWER ★ <b>119.7 (CTAF) 0 360.85</b>	GND CON <b>121.7 348.6</b>	CLNC DEL <b>118.3 270.3</b>	UNICOM <b>122.95</b>
------------------------	--	--	-------------------------------	--------------------------------	-------------------------



ELEV 232

TDZE 197

REIL Rwy 3 1

MIRL Rwy 3-21

HIRL Rwy 10-28

TWR 368

277°

3100 ↑	HEGAP 	VGSI and RNAV glidepath not coincident (VGSI Angle 3.00/TCH 75).	7 NM Holding Pattern