

LOC I-MGM 109.9	APCH CRS 097°	Rwy Idg TDZE Arpt Elev 9020 219 232	[USAF]	MONTGOMERY RGNL (DANNELLY FLD) (KMGM)	
---------------------------	-------------------------	---	--------	---------------------------------------	--

DME required. ADF and DME required for LOC only.

▼

***When ALS inop, increase RVR to 40 vis to ¾ miles.

▲

***When ALS inop, increase vis to 1½ miles.

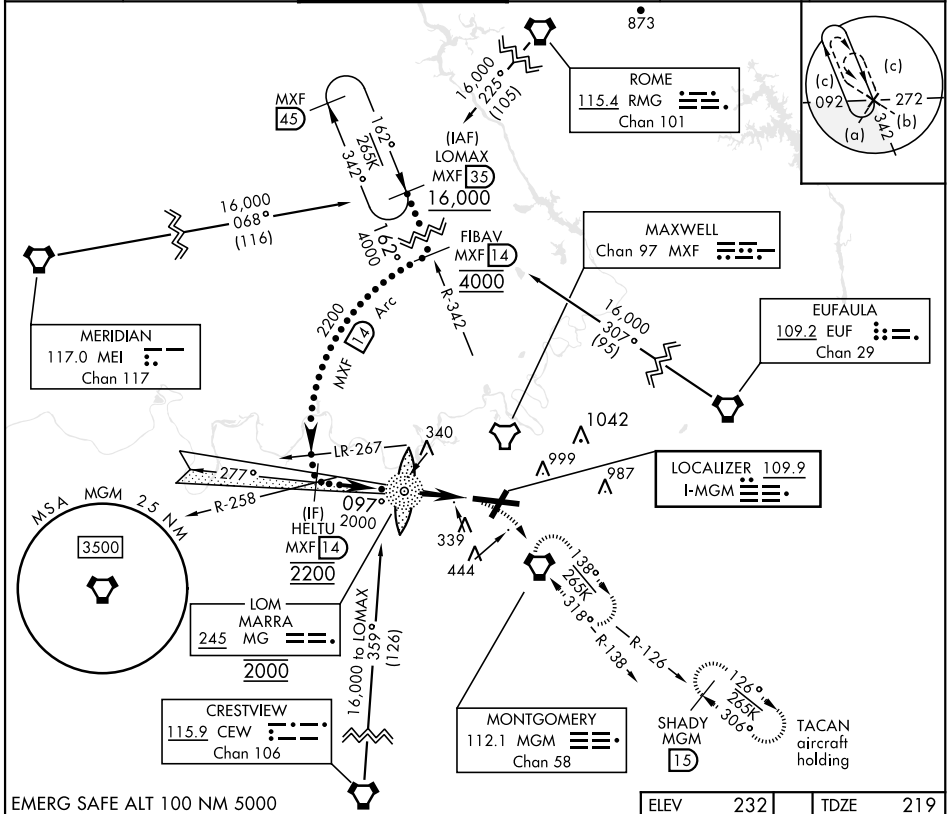
▲

***Circling not authorized for CAT E, N of Rwy 10-28.

MALSR

MISSED APPROACH: Climb to 700 then climbing right turn to 3000 direct MGM VORTAC and hold, continue climb in hold to 3000.
TACAN aircraft continue to 3500 on MGM R-126 to SHADY/ MGM 15 DME and hold southeast, right turn, 306° inbound.

ATIS 120.675	APP CON ★ 124.0 363.025	DANNELLY TOWER ★ 119.7(CTAF) 0360.85	GND CON 121.7 348.6	CLNC DEL 118.3 270.3	UNICOM 112.95
------------------------	-----------------------------------	--	-------------------------------	--------------------------------	-------------------------



EMERG SAFE ALT 100 NM 5000

HELTU MXF 14

GS 3.00° TCH 50

LOM 1908

2200

2000

097°

5.2 NM

700

3000

MGM

VGSI and ILS glidepath not coincident (VGSI Angle 3.00/TCH 64).

ELEV 232

TDZE 219

285 ±

287

245 ±

0.3% DOWN

9020 x 150

097°

TWR 368

HIRL Rwy 10-28

MIRL Rwy 3-21

REIL Rwy 3

FAF to MAP 5.2 NM

Knots	120	140	160	180	200
Min:Sec	2:36	2:14	1:57	1:44	1:34

CATEGORY	C	D	E
S-ILS 10 *	419/24	200	(200-½)
S-LOC 10 **	460/45	241	(500-¾)
*** CIRCLING	800-1½ 568 (600-1½)	860-2 628 (700-2)	860-2¼ 628 (700-2¼)