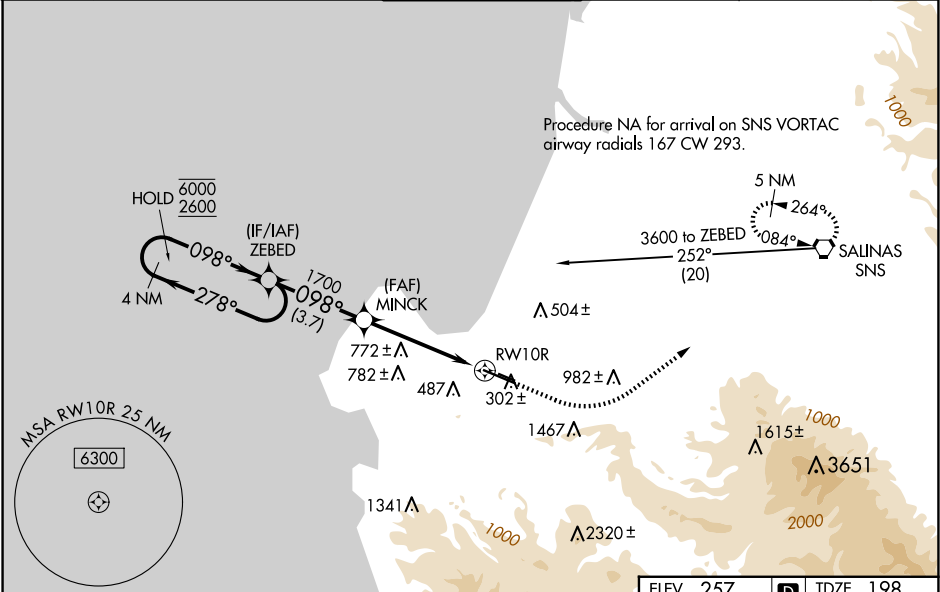


WAAS CH 69602 W10A	APP CRS 098°	Rwy Idg TDZE Apt Elev	7000 198 257
--	------------------------	-----------------------------	---

RNAV (GPS) RWY 10R
MONTEREY RGNL (MRY)

RNP APCH - GPS.	MALSR	MISSED APPROACH: Climb to 1000 then climbing left turn to 5000 direct SNS VORTAC and hold, continue climb-in-hold to 5000. *MISSED approach requires minimum climb of 387 feet per NM to 1700.
▼ For uncompensated Baro-VNAV systems, LNAV/VNAV NA below 2°C or above 54°C. Circling NA south of Rwy 10R-28L. For inop ALS, increase LPV all Cats visibility to 1½ SM and LNAV Cat C/D visibility to 2½ SM. *RVR 1800 authorized with use of FD or AP or HUD to DA.		

ATIS 119.25	NORCAL APP CON 133.0 251.15 (001°-135°) 127.15 307.125 (136°-360°)	MONTEREY TOWER ★ 118.4 (CTAF) 0 257.8	GND CON 120.875 348.6	CLNC DEL 135.45	UNICOM 122.95
-----------------------	--	--	---------------------------------	---------------------------	-------------------------



<p>4 NM Holding Pattern</p> <p>6000 ← 278° 2600 098° →</p> <p>GP 3.00° TCH 45</p> <p>ZEBED</p> <p>MINCK</p> <p>1000</p> <p>5000</p> <p>SNS</p> <p>2.4 NM to RWY 10R</p> <p>RWY 10R</p> <p>3.7 NM</p> <p>2.3 NM</p> <p>2.4 NM</p>					ELEV 257 D TDZE 198	
CATEGORY	A	B	C	D		
LPV DA*	398/24		200 (200-½)			
LPV DA	677/50		479 (500-1)			
LNAV/VNAV DA	754/60		556 (500-1¼)			
LNAV MDA	980/24 782 (800-½)	980/40 782 (800-¾)	980-1¾ 782 (800-1¾)			
CIRCLING	980-1 723 (800-1)	980-1¼ 723 (800-1¼)	1280-3 1023 (1100-3)		NA	
					<p>MIRL Rwy 10L-28R</p> <p>HIRL Rwy 10R-28L 0</p> <p>REIL Rwy 28L 0</p> <p>REIL Rwy 10L and 28R</p>	

SW-2, 10 JUL 2025 to 07 AUG 2025

SW-2, 10 JUL 2025 to 07 AUG 2025