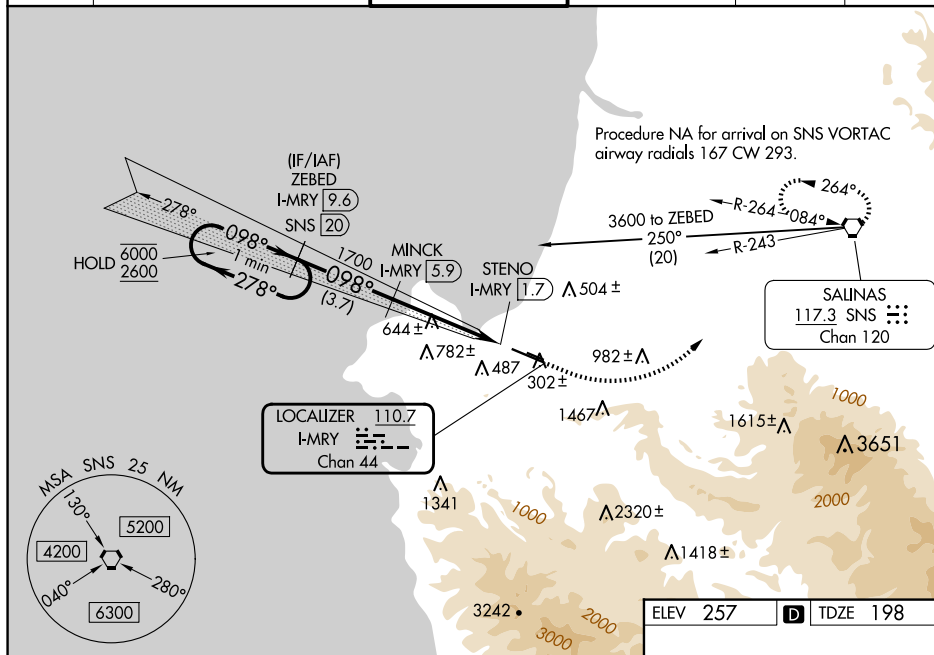


ILS or LOC RWY 10R  
MONTEREY RGNL (MRY)

**T**  
**A** Circling NA south of Rwy 10R-28L.  
For inop ALS, increase S-ILS 10R all Cats visibility to RVR 6000,  
and increase S-LOC 10R Cat C and D visibility to 2 SM.

**MISSED APPROACH:** Climb to 600 then climbing left turn to 5000 on heading 030° and on SNS VORTAC R-243 to SNS VORTAC and hold, continue climb-in-hold to 5000.  
# Missed approach requires minimum climb of 265 feet per NM to 1360.

ATIS <b>119.25</b>	NORCAL APP CON <b>133.0 251.15</b> (001°-135°) <b>127.15 307.125</b> (136°-360°)	MONTEREY TOWER ★ <b>118.4 (CTAF) 0 257.8</b>	GND CON <b>120.875 348.6</b>	CLNC DEL <b>135.45</b>	UNICOM <b>122.95</b>
-----------------------	--	---	---------------------------------	---------------------------	-------------------------



One Minute Holding Pattern

ZEBED I-MRY 9.6

MINCK I-MRY 5.9

SNS R-243

6000 ← 278°

2600 → 098°

098°

1700

\*I-MRY 3.4

\*LOC only

STENO I-MRY 1.7

GS 3.00° TCH 45


3.7 NM

2.5 NM

1.7 NM

0.5 NM

hdg 030°

CATEGORY	A	B	C	D
S-ILS 10R #	398/24 200 (200-½)			
S-ILS 10R	583/35 385 (400-¾)			
S-LOC 10R	920/24 722 (700-½)		920-1½ 722 (700-1½)	
 CIRCULING	920-1 663 (700-1)		1280-3 1023 (1100-3)	NA

