

VORTAC MLU	APP CRS	Rwy Idg
<b>117.2</b>	<b>236°</b>	<b>7504</b>
Chan <b>119</b>		TDZE <b>78</b>
		Apt Elev <b>79</b>

VOR RWY 22  
MONROE RGNL (MLU)

DME required.

⚠

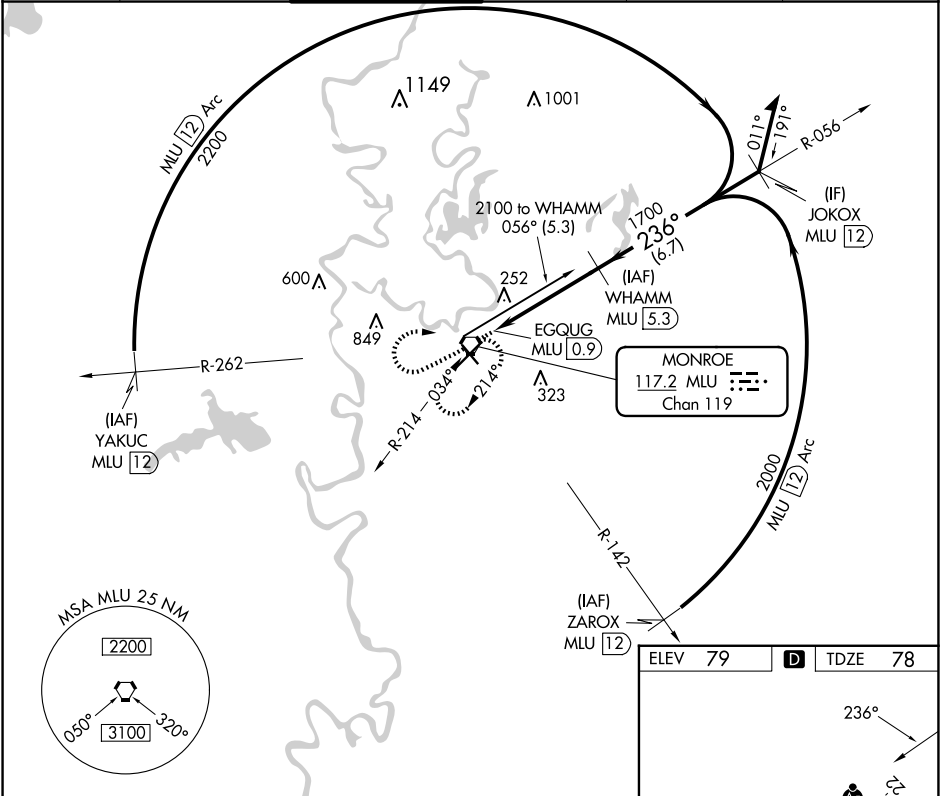
Circling Rwy 14 NA at night. Rwy 22 helicopter visibility reduction below ¾ SM NA. For inop ALS, increase S-22 Cat A/B ASR visibility to 1 SM, and Cat C/D to 1½ SM.

MALSR

MISSED APPROACH:

Climb to 1800 then climbing right turn to 3000 direct MLU VORTAC and hold, continue climb-in-hold to 3000.

ATIS	MONROE APP CON ★	MONROE TOWER ★	GND CON	CLNC DEL	UNICOM
<b>125.05</b>	<b>118.15 290.475</b>	<b>118.9 (CTAF) 257.8</b>	<b>121.9</b>	<b>121.65</b>	<b>122.95</b>



1800 3000 MLU

WHAMM MLU 5.3

Remain within 10 NM

056° 2100

236° 1700

≤ 3.00° TCH 50

0.5 0.9 3.6 NM

CATEGORY	A	B	C	D
S-22	560-¾ 482 (500-¾)		560-1 482 (500-1)	
CIRCLING	560-1 481 (500-1)	580-1 501 (600-1)	740-1¾ 661 (700-1¾)	1160-3 1081 (1100-3)

ELEV 79 D TDZE 78

REIL Rwy 14 and 32

MIRL Rwy 14-32

HIRL Rwy 4-22

SC-4, 10 JUL 2025 to 07 AUG 2025

SC-4, 10 JUL 2025 to 07 AUG 2025