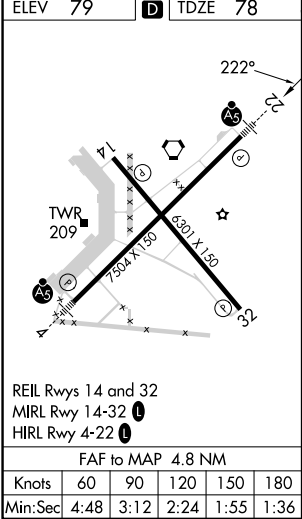
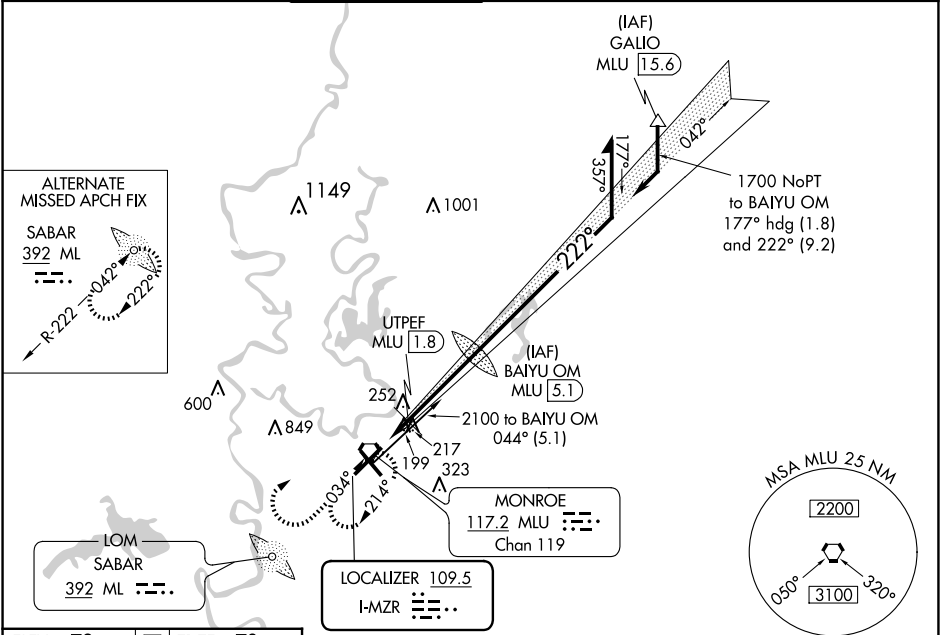


LOC I-MZR 109.5	APP CRS 222°	Rwy Idg TDZE 78 Apt Elev 79
---------------------------	------------------------	---

ILS or LOC RWY 22
MONROE RGNL (MLU)

DME or RADAR required for procedure entry.		MALSR 	MISSED APPROACH: Climb to 1800 then climbing right turn to 3000 direct MLU VORTAC and hold, continue climb-in-hold to 3000.
Circling Rwy 14 NA at night. For inop ALS, increase S-LOC 22 Cat C/D visibility to 1½ SM. # DME from MLU VORTAC.			

ATIS 125.05	MONROE APP CON ★ 118.15 290.475	MONROE TOWER ★ 118.9 (CTAF) 257.8	GND CON 121.9	CLNC DEL 121.65	UNICOM 122.95
-----------------------	---	---	-------------------------	---------------------------	-------------------------



1800 3000 MLU		BAIYU OM MLU 5.1		VGSI and ILS glidepath not coincident (VGSI Angle 3.00/TCH 50).	
*LOC only.		UTPEF MLU 1.8		Remain within 10 NM	
1675		042°		2100	
560*		1700		GS 3.00° TCH 54	
1.4 NM		3.4 NM			
CATEGORY	A	B	C	D	
S-ILS 22	278-½ 200 (200-½)				
S-LOC 22	560-½	482 (500-½)	560-1	482 (500-1)	
CIRCLING	580-1	501 (600-1)	740-1¾ 661 (700-1¾)	1160-3 1081 (1100-3)	
# UTPEF FIX MINIMUMS					
S-LOC 22	500-½	422 (500-½)	500-¾	422 (500-¾)	
CIRCLING	580-1	501 (600-1)	740-1¾ 661 (700-1¾)	1160-3 1081 (1100-3)	

SC-4, 10 JUL 2025 to 07 AUG 2025

SC-4, 10 JUL 2025 to 07 AUG 2025