
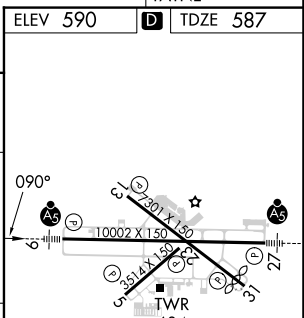
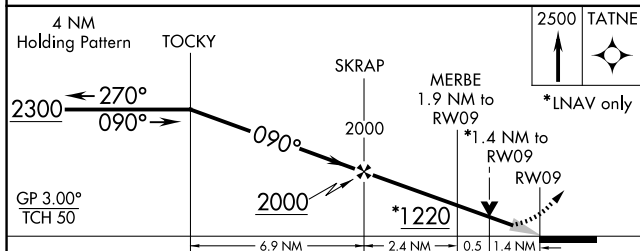
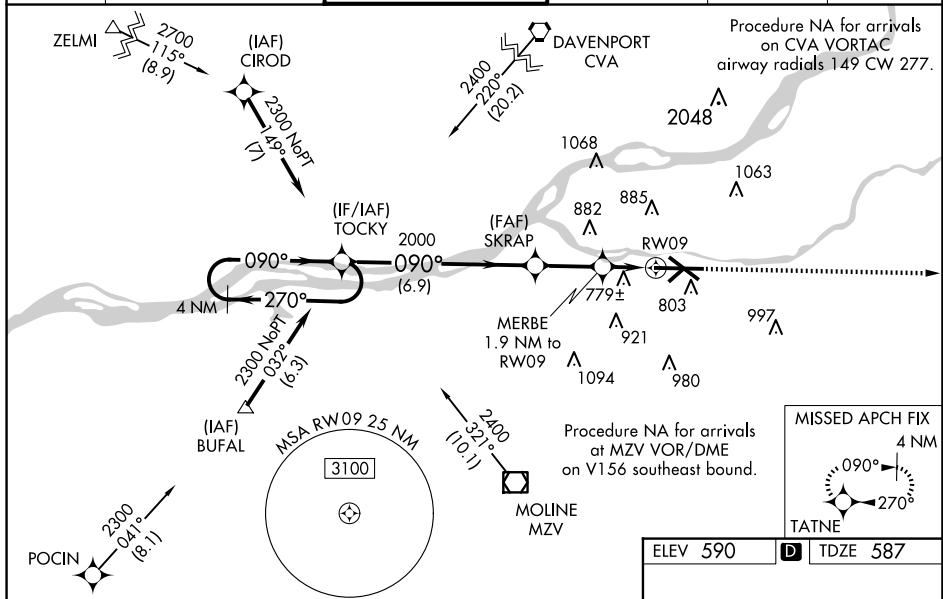


WAAS CH 61123 W09A	APP CRS 090°	Rwy Idg 10002 TDZE 587 Apt Elev 590
--	------------------------	--

RNAV (GPS) RWY 9
QUAD CITIES INTL (MLI)

<p>⚠ Circling to Rwy 5 NA at night. Baro-VNAV NA when using Davenport altimeter setting. For uncompensated Baro-VNAV systems, LNAV/VNAV NA below -26°C (-14°F) or above 40°C (104°F). DME/DME RNP-0.3 NA. VDP NA when using Davenport altimeter setting. When local altimeter setting not received, use Davenport altimeter setting and increase LPV DA to 825 feet and LNAV/VNAV DA to 1160 feet and LNAV/VNAV visibility all Cats ½ SM; increase all MDA 60 feet and LNAV visibility Cats C and D ½ SM, Circling Cats C and D ½ SM. For inoperative ALS, increase LNAV visibility Cats C and D to 1 ½ SM. When using Davenport altimeter increase LNAV/VNAV visibility all Cats to 2 SM, LNAV visibility Cats C and D to 1 ½ SM.</p> <p>** RVR 1800 authorized with use of FD or AP or HUD to DA.</p>	<p>MALS</p> <p>A5 </p> <p>MISSED APPROACH: Climb to 2500 direct TATNE and hold.</p>
---	---

ATIS 121.2	QUAD CITY APP CON ★ 125.95 257.8	QUAD CITY TOWER ★ 119.4 (CTAF) 0 269.55	GND CON 121.9	CLNC DEL 124.05	UNICOM 122.95
---------------	-------------------------------------	--	------------------	--------------------	------------------



CATEGORY	A	B	C	D
LPV DA **	787/24 200 (200-½)			
LNAV/ VNAV DA	1122-1⅜ 535 (600-1⅜)			
LNAV MDA	1060/24 473 (500-½)		1060/50 473 (500-1)	
CIRCLING	1140-1 550 (600-1)	1200-1 610 (700-1)	1320-2 730 (800-2)	1420-2¾ 830 (900-2¾)

MIRL Rwy 5-23
REIL Rwys 13 and 31 **L**
HIRL Rwys 9-27 and 13-31

EC-3, 10 JUL 2025 to 07 AUG 2025

EC-3, 10 JUL 2025 to 07 AUG 2025