

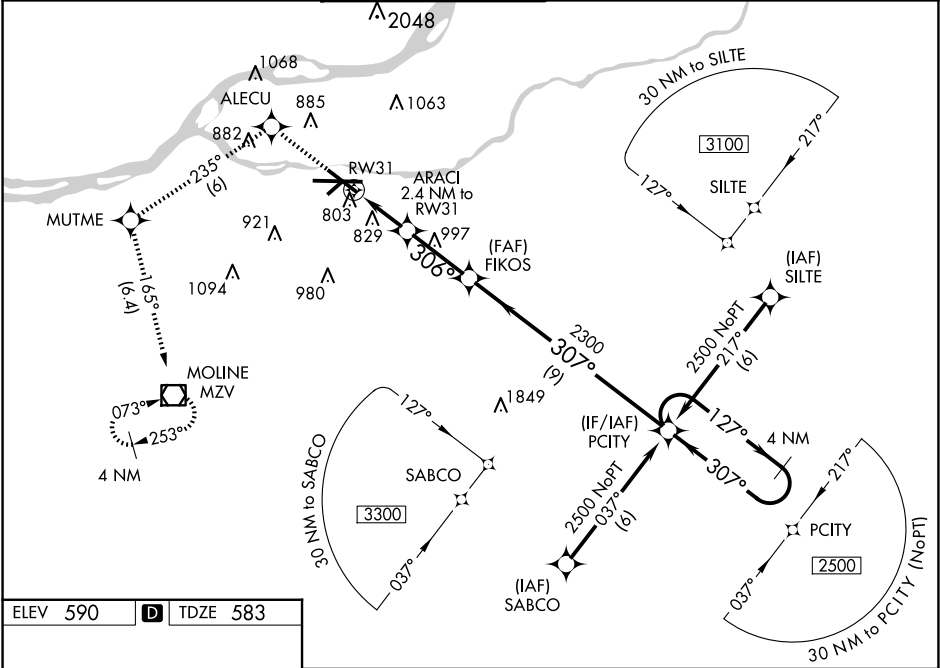
WAAS CH 86715 W31A	APP CRS 306°	Rwy Idg TDZE 583 Apt Elev 590
--	------------------------	---

RNAV (GPS) RWY 31
QUAD CITIES INTL (MLI)

⚠ Circling to Rwy 5 NA at night. For uncompensated Baro-VNAV systems, LNAV/VNAV NA below -16°C (4°F) or above 47°C (116°F). DME/DME RNP-0.3 NA. When local altimeter setting not received, use Davenport altimeter setting and increase LPV DA to 1078 feet and LNAV/VNAV DA to 1207 feet and all MDA 60 feet, increase LPV all Cats, LNAV/VNAV all cats, LNAV Cats C and D, and Circling Cats C and D visibility ¼ SM. Baro-VNAV and VDP NA when using Davenport altimeter setting. Rwy 31 helicopter visibility reduction below ¾ SM NA.

MISSED APPROACH: Climb to 3000 direct ALECU and on track 235° to MUTME and on track 165° to MZV VOR/DME and hold.

ATIS 121.2	QUAD CITY APP CON ★ 125.95 257.8	QUAD CITY TOWER ★ 119.4 (CTAF) 269.55	GND CON 121.9	CLNC DEL 124.05	UNICOM 122.95
----------------------	--	---	-------------------------	---------------------------	-------------------------



ELEV 590 **D** TDZE 583

HIRL Rwy 9-27 and 13-31
MIRL Rwy 5-23
REIL Rwy 13 and 31

3000	ALECU	tr 235°	MUTME	tr 165°	MZV	PCITY	4 NM Holding Pattern
*LNAV only							
ARACI 2.4 NM to RW31							
*1.4 NM to RW31							
*1380							
2300							
GP 3.00° TCH 48							
CATEGORY	A	B	C	D			
LPV DA	1031-1½ 448 (500-1½)						
LNAV/VNAV DA	1160-2 577 (600-2)						
LNAV MDA	1080-1	497 (500-1)	1080-1½	497 (500-1½)	1080-1½	497 (500-1½)	
CIRCLING	1140-1	1200-1	1320-2	1420-2¾	730 (800-2)	830 (900-2¾)	

EC-3, 10 JUL 2025 to 07 AUG 2025

EC-3, 10 JUL 2025 to 07 AUG 2025