

LOC/DME I-MLI <u>110.5</u> Chan 42	APP CRS 090°	Rwy Idg 10002 TDZE 587 Apt Elev 590
--	------------------------	--

ILS or LOC RWY 9
QUAD CITIES INTL (MLI)

DME required for procedure entry at CVA VORTAC and MZV VOR/DME.

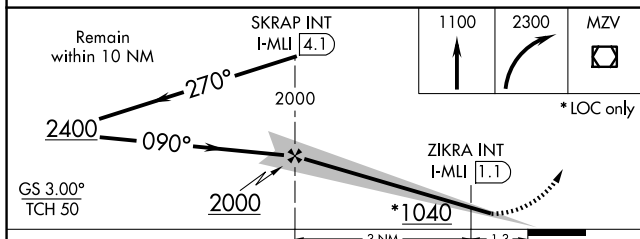
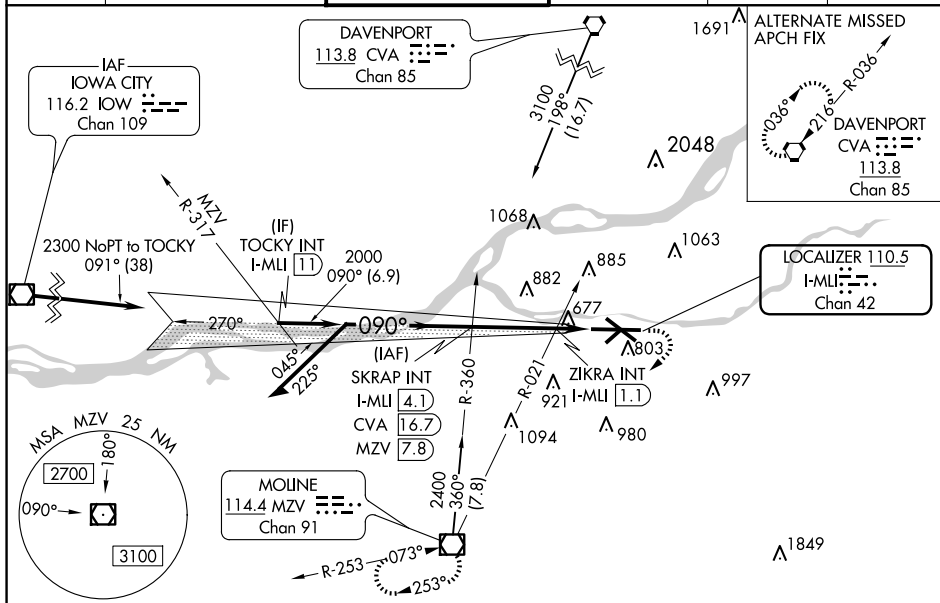
T Circling to Rwy 5 NA at night. For inop ALS, increase S-LOC 9 Cats C and D visibility to 1 3/4 SM. ZIKRA Minimums: For inop ALS, increase S-LOC Cats C and D visibility to 1 SM.
A # RVR 1800 authorized with use of FD or AP or HUD to DA.

MALSR

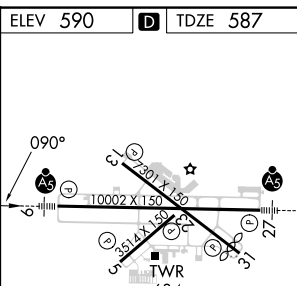


MISSED APPROACH: Climb to 1100 then climbing right turn to 2300 direct MZV VOR/DME and hold.

ATIS 121.2	QUAD CITY APP CON ★ 125.95 257.8	QUAD CITY TOWER ★ 119.4(CTAF) 269.55	GND CON 121.9	CLNC DEL 124.05	UNICOM 122.95
---------------	-------------------------------------	---	------------------	--------------------	------------------



CATEGORY	A	B	C	D
S-ILS 9 #	787/24 200 (200-½)			
S-LOC 9	1040/24 453 (500-½)	1040/50 453 (500-1)		
CIRCLING	1140-1 550 (600-1)	1200-1 610 (700-1)	1320-2 730 (800-2)	1420-2¾ 830 (900-2¾)
ZIKRA MINIMUMS (Dual VOR receivers or DME required)				
S-LOC 9	940/24 353 (400-½)	940/35 353 (400-½)		
CIRCLING	1140-1 550 (600-1)	1200-1 610 (700-1)	1320-2 730 (800-2)	1420-2¾ 830 (900-2¾)



MIRL Rwy 5-23	
REIL Rwy 13 and 31	L
HIRL Rwy 9-27 and 13-31	
FAF to MAP 4.3	

Knots	60	90	120	150	180
Min:Sec	4:18	2:52	2:09	1:43	1:26