

VORTAC BFM <b>116.35</b> Chan <b>110(Y)</b>	APP CRS <b>333°</b>	Rwy Ldg TDZE <b>25</b> Apt Elev <b>26</b>
---	------------------------	---

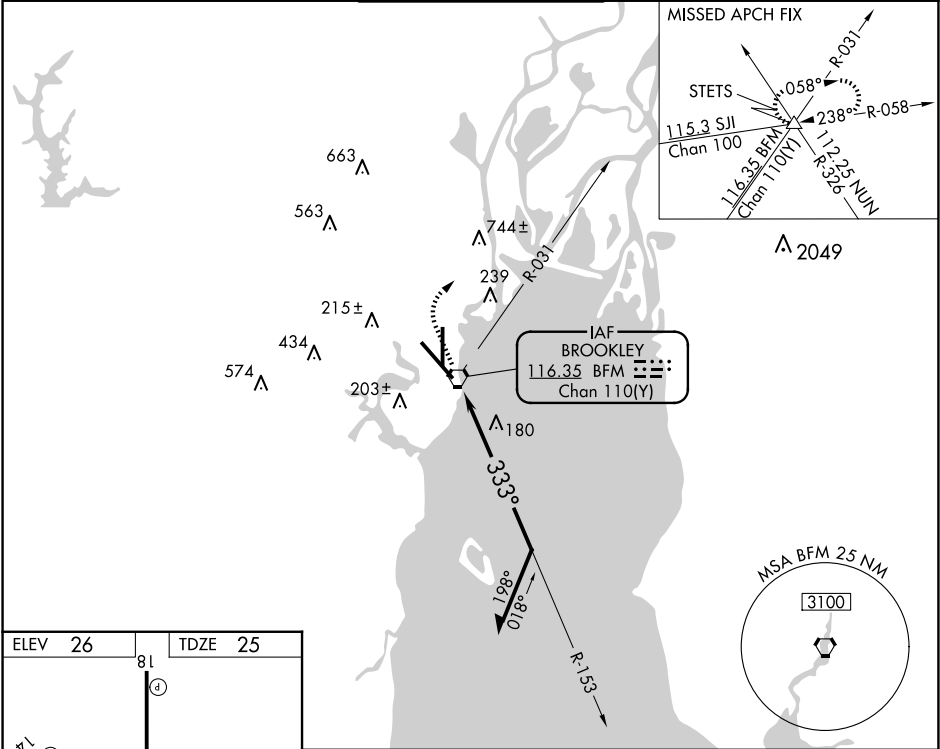
VOR RWY 32  
MOBILE INTL (BFM)

**⚠** When local altimeter setting not received, use Mobile Rgnl altimeter setting and increase all MDAs 60 feet. For inop MALSR, increase S-32 Cats C/D visibility to 1 $\frac{3}{4}$  SM. For inop MALSR when using Mobile Rgnl altimeter setting, increase S-32 Cats C/D visibility to 1 $\frac{3}{4}$  SM.

**MALSR**

**MISSED APPROACH:** Climb to 600 then climbing right turn to 2000 via heading 040° and BFM VORTAC R-031 to STETS INT and hold.

ATIS <b>135.575</b>	MOBILE APP CON ★ <b>118.5 269.3</b>	INTERNATIONAL TOWER★ <b>118.8(CTAF) 0 251.1</b>	GND CON <b>121.7 239.3</b>	UNICOM <b>122.95</b>
------------------------	--	--	-------------------------------	-------------------------



ELEV 26	TDZE 25
81	7800 X 150

TWR

36

333°

REIL Rwy 14  
MIRL Rwy 18-36  
HIRL Rwy 14-32  
TDZ/CL Rwy 32

600	2000	BFM R-031	STETS
↑	hdg 040°		△

BFM VORTAC

153°

1800

333°

0.1 1.3

CATEGORY	A	B	C	D
S-32	540/24	515 (600- $\frac{1}{2}$ )	540/55	515 (600-1)
CIRCLING	680-1	654 (700-1)	680-1 $\frac{3}{4}$ 654 (700-1 $\frac{3}{4}$ )	1100-3 1074 (1000-3)

Remain within 10 NM