

WAAS CH 97611 W18A	APP CRS 181°	Rwy Ldg TDZE 26 Apt Elev 26
--	------------------------	---

RNAV (GPS) RWY 18

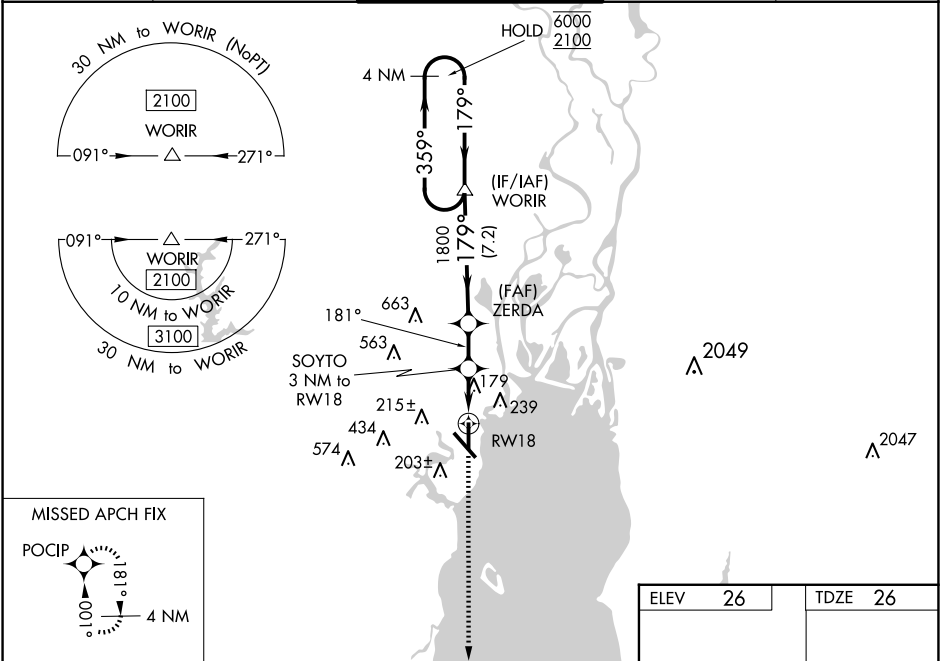
MOBILE INTL (BFM)

RNP APCH - GPS.

Rwy 18 helicopter visibility reduction below ¾ SM NA. For uncompensated Baro-VNAV systems, LNAV/VNAV NA below -2°C or above 54°C.

MISSED APPROACH: Climb to 2000 direct POCIP and hold.

ATIS 135.575	MOBILE APP CON ★ 118.5 269.3	INTERNATIONAL TOWER★ 118.8 (CTAF) 0 251.1	GND CON 121.7 239.3	UNICOM 122.95
------------------------	--	---	-------------------------------	-------------------------



4 NM Holding Pattern

VGSI and RNAV glidepath not coincident (VGSI Angle 3.00/TCH 64).

2000

POCIP

6000
2100

359°

179°

179°

1800

181°

1020

1.1 NM to RW18

1.9

1.1

7.2 NM

2.5 NM

GP 3.00°
TCH 50

CATEGORY	A	B	C	D
LPV DA		276-1	250 (300-1)	
LNAV/VNAV DA		419-1½	393 (400-1½)	
LNAV MDA	440-1	414 (500-1)	440-1½	414 (500-1½)
CIRCLING	680-1	654 (700-1)	680-1¾ 654 (700-1¾)	1100-3 1074 (1100-3)

ELEV 26

TDZE 26

181°

81

7800 X 150

36

REIL Rwy 14

MIRL Rwy 18-36

HIRL Rwy 14-32

TDZ/CL Rwy 32