

24193

RNAV (GPS) RWY 15
MOBILE RGNL (MOB)

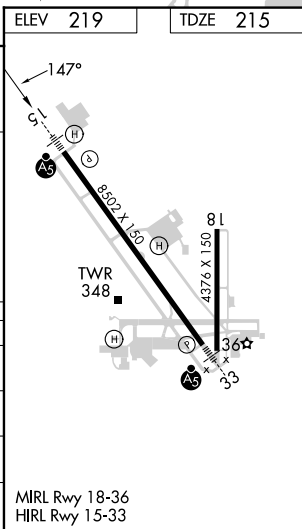
MISSED APPROACH: Climb to 2000 direct JOTEN and on track 189° to SAINT and hold.

MALSR

124.75	257.85	118.5	269.3	118.3 (CTAF) 0	239.0	121.9	348.6	119.85	122.95
--------	--------	-------	-------	-----------------------	-------	-------	-------	--------	--------



VGSJ and RNAV glidepath not coincident (VGSJ Angle 3.00/TCH 50).		2000 	JOTEN 	tr 189° 	SAINT
4 NM Holding Pattern	BAYAS	CAYAT 1800	DICAD 2.4 NM to RW15	1.1 NM to RW15	RW15
6000 ← 327° 2000 ← 147°	147°	1800	1020	1.1 NM	
GP 3.00° TCH 55	6.7 NM	2.4 NM	1.3 NM	1.1 NM	
CATEGORY	A	B	C	D	
LPV DA*	415/24 200 (200-½)				
RNAV/ VNAV DA	636/45 421 (500-⅞)				
RNAV MDA	620/40 405 (500-¾)				
CIRCLING	680-1	461 (500-1)	740-1½ 521 (600-1½)	780-2 561 (600-2)	



RNAV (GPS) RWY 15

SE-4. 10 JUL 2025 to 07 AUG 2025