

LOC I-ATE 111.5	APP CRS 327°	Rwy Idg 8502 TDZE 219 Apt Elev 219
---------------------------	------------------------	---

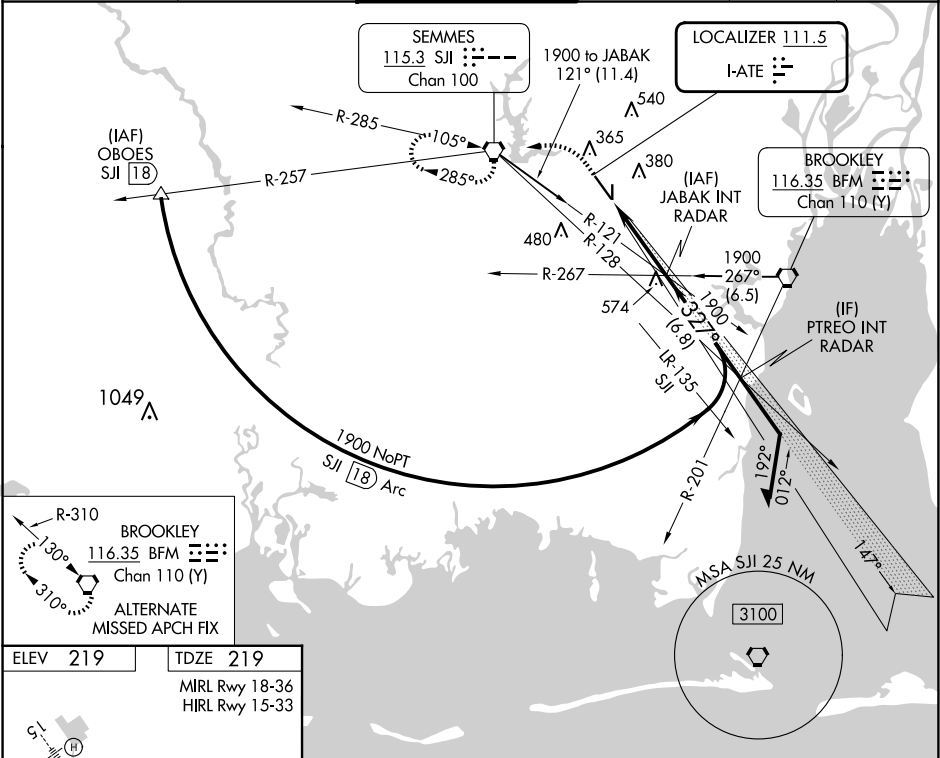
ILS or LOC RWY 33
MOBILE RGNL (MOB)

* RVR 1800 authorized with use of FD or AP or HUD to DA.

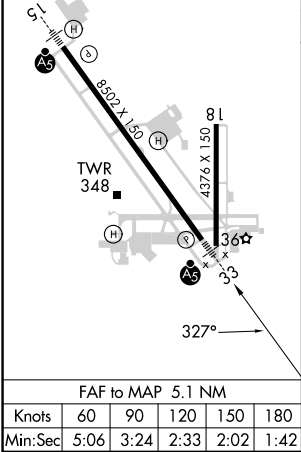
MALSR

MISSED APPROACH: Climb to 700 then climbing left turn to 2000 direct SJI VORTAC and hold.

ATIS 124.75 257.85	MOBILE APP CON ★ 118.5 269.3	MOBILE TOWER ★ 118.3 (CTAF) 239.0	GND CON 121.9 348.6	CLNC DEL 119.85	UNICOM 122.95
------------------------------	--	---	-------------------------------	---------------------------	-------------------------



ELEV 219	TDZE 219
MIRL Rwy 18-36 HIRL Rwy 15-33	



700

2000

SJI

JABAK INT RADAR

Remain within 10 NM

1900

147°

327°

1900

GS 3.00° TCH 57

5.1 NM

VGSI and ILS glidepath not coincident (VGSI Angle 3.00/TCH 50).

CATEGORY	A	B	C	D
S-ILS 33*	419/24 200 (200-½)			
S-LOC 33	660/24	441 (500-½)	660/45	441 (500-¾)
CIRCLING	680-1	461 (500-1)	740-1½ 521 (600-½)	780-2 561 (600-2)

SE-4, 10 JUL 2025 to 07 AUG 2025

SE-4, 10 JUL 2025 to 07 AUG 2025