

LOC I-MOB	APP CRS	Rwy Idg	8502
109.9	147°	TDZE	215
		Apt Elev	219

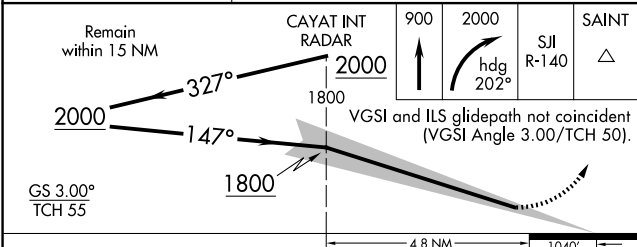
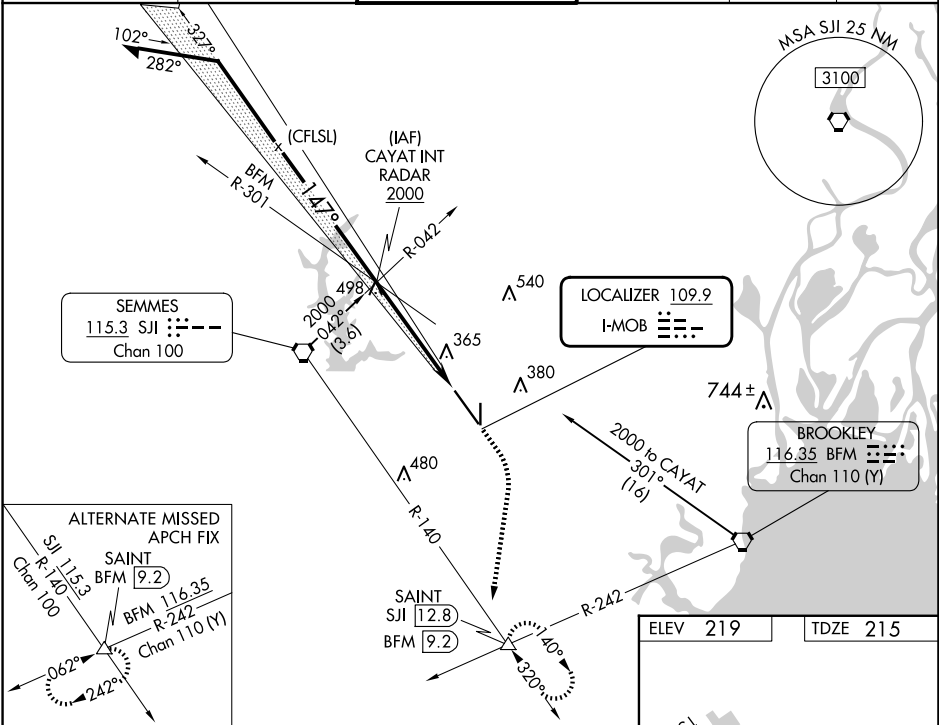
ILS RWY 15 (SA CAT I & II)  
MOBILE RGNL (MOB)

**Procedure NA when tower closed.**  
SA CAT I: Requires specific OPSPEC, MSPEC, or LOA approval and use of HUD to DH.  
SA CAT II: Reduced Lighting: Requires specific OPSPEC, MSPEC, or LOA approval and use of autoland or HUD to touchdown.

**MALSR**

**MISSED APPROACH:** Climb to 900 then climbing right turn to 2000 on heading 202° then on SJI VORTAC R-140 to SAINT/ SJI 12.8 DME and hold.

ATIS	MOBILE APP CON ★	MOBILE TOWER ★	GND CON	CLNC DEL	UNICOM
124.75 257.85	118.5 269.3	118.3 (CTAF) 239.0	121.9 348.6	119.85	122.95



CATEGORY	A	B	C	D
S-ILS 15	SA CAT I	RA 171/14	150	DA 365
S-ILS 15	SA CAT II	RA 109/12	100	DA 315

ELEV 219 TDZE 215

The diagram shows the runway layout for RWY 15. The runway is 8502' x 150'. The taxiway is 4376' x 150'. The runway width is 36'. The taxiway width is 33'. The diagram also shows the TWR at 348 and the MRL Rwy 18-36 and HIRL Rwy 15-33.

SA CATEGORY I & II ILS - SPECIAL AIRCREW  
& AIRCRAFT CERTIFICATION REQUIRED

SE-4, 10 JUL 2025 to 07 AUG 2025

SE-4, 10 JUL 2025 to 07 AUG 2025